



# LABOUR FORCE

AUSTRALIA  
PRELIMINARY

EMBARGO: 11:30AM (CANBERRA TIME) THURS 13 MAR 2003

## FEBRUARY KEY FIGURES

### TREND

	Jan 2003	Feb 2003	monthly change
Employed persons ('000)	9 526.1	9 559.6	0.4 %
Unemployed persons ('000)	614.2	614.4	0.0 %
Unemployment rate (%)	6.1	6.0	0.0 pts
Participation rate (%)	64.3	64.5	0.2 pts

### SEASONALLY ADJUSTED

	Jan 2003	Feb 2003	monthly change
Employed persons ('000)	9 575.8	9 563.5	-12.3
Unemployed persons ('000)	619.7	609.7	-10.0
Unemployment rate (%)	6.1	6.0	-0.1 pts
Participation rate (%)	64.7	64.4	-0.2 pts

## FEBRUARY KEY POINTS

### TREND ESTIMATES

#### EMPLOYMENT

- increased to 9,559,600.

#### UNEMPLOYMENT

- increased marginally to 614,400.

#### UNEMPLOYMENT RATE

- decreased marginally to 6.0%.

#### PARTICIPATION RATE

- increased to 64.5%.

**NOTE!** Seasonally adjusted estimates incorporate results of annual reanalysis - see explanatory note 17.

### SEASONALLY ADJUSTED ESTIMATES

#### EMPLOYMENT

- decreased by 12,300 to 9,563,500. Full-time employment increased by 10,000 to 6,852,100 and part-time employment decreased by 22,300 to 2,711,400.

#### UNEMPLOYMENT

- decreased by 10,000 to 609,700. The number of persons looking for full-time work decreased by 8,600 to 458,200 and the number of persons looking for part-time work decreased by 1,400 to 151,600.

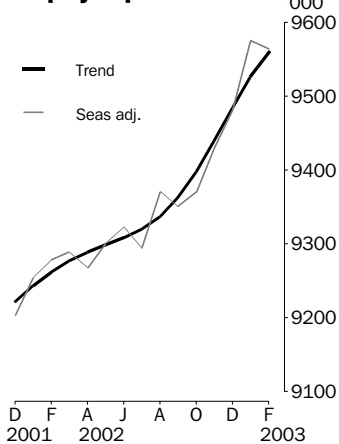
#### UNEMPLOYMENT RATE

- decreased by 0.1 percentage point to 6.0%. The male and female rates both decreased by 0.1 percentage point to 6.1% and 5.8% respectively.
- NSW 5.9% (6.0% last month), Vic 5.2% (5.5%), Qld 6.9% (6.8%), SA 6.3% (6.1%), WA 5.6% (6.0%), Tas 9.7% (8.6%).

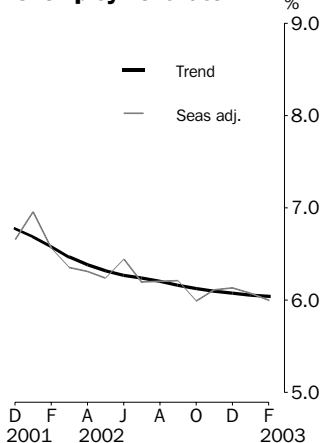
#### PARTICIPATION RATE

- decreased by 0.2 percentage points to 64.4%.

### Employed persons



### Unemployment rate



- For further information about these and related statistics, contact Peter Bradbury on 02 6252 6525, or the National Information and Referral Service on 1300 135 070.

# NOTES

FORTHCOMING ISSUES	ISSUE	RELEASE DATE
	March 2003	10 April 2003
	April 2003	08 May 2003
	May 2003	12 June 2003
	June 2003	10 July 2003
	July 2003	07 August 2003
	August 2003	11 September 2003



## NOTES ON ESTIMATES

A new sample for the Labour Force Survey is being introduced progressively over the period November 2002 to June 2003. See paragraphs 13 to 15 of the Explanatory Notes or *Information Paper: Labour Force Survey Sample Design* (cat. no. 6269.0) for details.

Following the regular annual seasonal reanalysis which is introduced in this issue, the total published growth in employment, seasonally adjusted, over the four months from November 2002 to February 2003 (coinciding with the introduction of a little more than half the new sample), is 193,700.

To assist in the interpretation of the published estimates, the ABS is investigating the labour force characteristics of the new sample in comparison with the sample that it is replacing. Analyses to date have used alternative methods that place greater emphasis on the sample that is common between consecutive months of the survey.

The matched rotation group method calculates monthly movements using the 7/8th of the sampled dwellings that are common between consecutive months under the LFS rotation scheme. This method produces an increase in employment (seasonally adjusted) over the last four months of about 30,000 less than the published estimate. However, some caution should be used in interpreting matched rotation group estimates, as they have a tendency to underestimate employment growth. If an adjustment were made for this effect, the estimated change in employment from the matched rotation group estimate would be closer to the published figure.

Composite estimation, a technique which does not exhibit this effect, produces an estimate of employment growth over the last four months that is broadly similar to the currently published figure. For information about matched rotation group and composite estimates, see the article in the May 1998 issue of *Australian Economic Indicators* (cat. no. 1350.0).

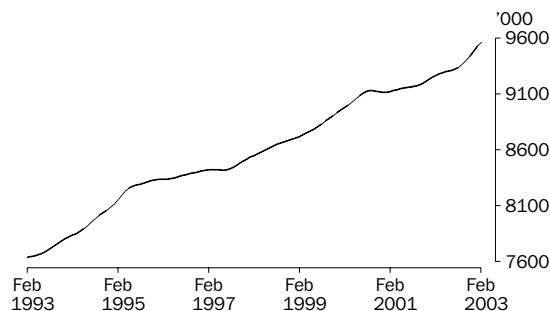
While additional sampling error is expected during implementation of the new sample, there is no evidence from these analyses that the change in sample has materially affected estimates of employment growth. Further analyses are being undertaken, and the ABS will publish the results when they are completed.

Susan Linacre  
Acting Australian Statistician

# PRINCIPAL LABOUR FORCE SERIES: Trend estimates

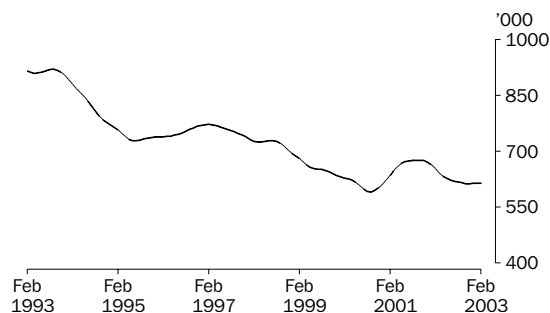
## EMPLOYED PERSONS

The trend estimate of employed persons generally rose from a low of 7,634,000 in January 1993 to 9,129,400 in September 2000. The trend then fell to 9,112,800 in December 2000 before rising to stand at 9,559,600 in February 2003.



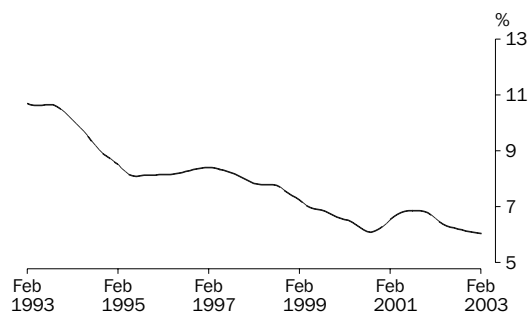
## UNEMPLOYED PERSONS

The trend estimate of unemployed persons peaked at 920,700 in September 1993, before falling rapidly to 728,100 in July 1995. The trend then rose slowly, reaching 771,900 in February 1997, before falling to 590,900 in September 2000. The trend then rose to 676,000 in October 2001, before falling to stand at 614,400 in February 2003.



## UNEMPLOYMENT RATE

The trend unemployment rate fell rapidly from 10.7% in August 1993 to 8.1% in July 1995. The trend then rose slowly until February 1997, before falling to 6.1% in September 2000. The trend rate then rose to 6.9% in September 2001, before falling to 6.0% in February 2003.

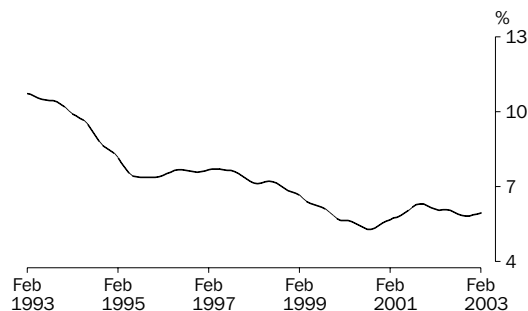


## STATES: Trend estimates

### UNEMPLOYMENT RATE

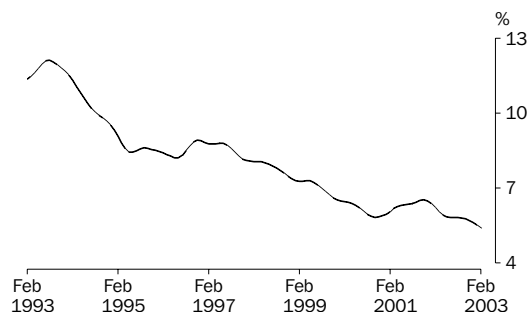
#### NEW SOUTH WALES

The trend unemployment rate for New South Wales fell steadily from 10.7% in February 1993 to 7.4% in August 1995. The trend then rose gradually, reaching 7.7% in April 1997, before falling to 5.3% in September 2000. The trend rate then rose to 6.3% in October 2001, before generally falling to stand at 6.0% in February 2003.



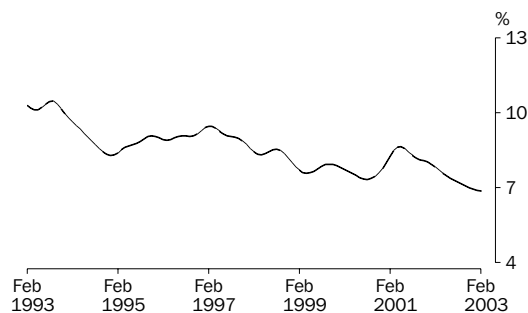
#### VICTORIA

The trend estimate of the unemployment rate for Victoria decreased from a peak of 12.1% in August 1993 to 8.2% in June 1996. The trend then rose until November 1996, before falling steadily to 5.8% in October 2000. The trend then rose until November 2001, before decreasing to 5.4% in February 2003.



#### QUEENSLAND

The trend estimate of the unemployment rate for Queensland decreased from a peak of 10.5% in September 1993 to 8.3% in December 1994. The trend then rose to 9.5% in February 1997, before generally falling to 7.3% in August 2000. After rising to 8.6% in May 2001, the trend rate has fallen to stand at 6.9% in February 2003.

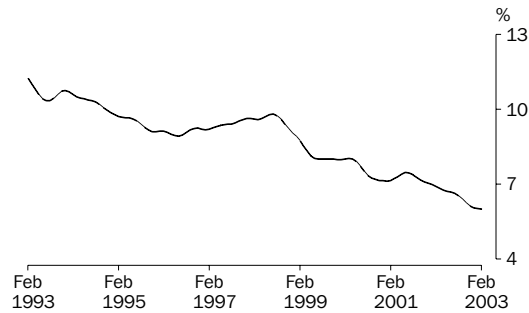


## STATES: Trend estimates

### UNEMPLOYMENT RATE

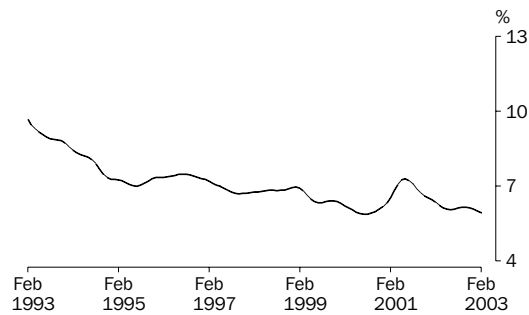
#### SOUTH AUSTRALIA

The trend unemployment rate for South Australia declined from 11.2% in February 1993 to 8.9% in June 1996. The trend then rose slowly to 9.8% in July 1998. Apart from a small increase in early 2001, the trend rate has generally fallen for the last four years, and stands at 6.0% in February 2003.



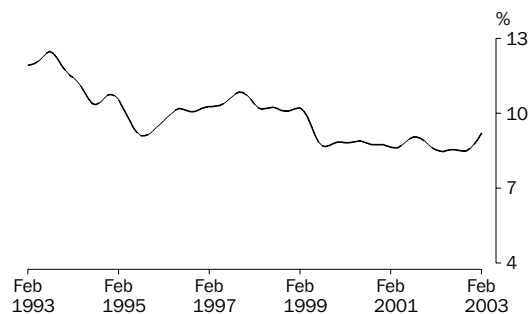
#### WESTERN AUSTRALIA

The trend estimate of the unemployment rate for Western Australia fell to 7.0% in July 1995, before rising to 7.5% in July 1996. After generally falling to 5.9% in July 2000, the trend rose to 7.3% in June 2001. Since then the trend has fallen to stand at 5.9% in February 2003.



#### TASMANIA

The trend estimate of the unemployment rate for Tasmania fell from a peak of 12.5% in August 1993 to 9.1% in September 1995. After rising to 10.8% in October 1997, the trend generally fell to 8.7% in September 1999. The trend estimate remained relatively steady until October 2002, before rising to stand at 9.2% in February 2003.



## LABOUR FORCE STATUS (AGED 15 AND OVER): Original

Month	EMPLOYED.....			UNEMPLOYED.....			Labour force	Not in labour force	Civilian population aged 15 and over	Unemployment rate	Participation rate
	Full time	Part time	Total	Looking for f/t work	Looking for p/t work	Total					
	'000	'000	'000	'000	'000	'000					
MALES											
<b>2001</b>											
December	4 501.3	715.0	5 216.3	313.2	63.3	376.5	5 592.8	2 060.2	7 653.0	6.7	73.1
<b>2002</b>											
January	4 428.8	695.9	5 124.7	353.4	69.3	422.8	5 547.5	2 113.8	7 661.3	7.6	72.4
February	4 444.8	723.3	5 168.1	350.0	66.8	416.8	5 584.8	2 084.7	7 669.5	7.5	72.8
March	4 416.7	758.7	5 175.3	310.3	71.2	381.5	5 556.9	2 120.9	7 677.8	6.9	72.4
April	4 412.8	769.0	5 181.8	300.5	70.0	370.5	5 552.4	2 135.7	7 688.0	6.7	72.2
May	4 446.0	746.8	5 192.7	298.5	65.7	364.1	5 556.9	2 141.4	7 698.3	6.6	72.2
June	4 415.9	805.2	5 221.1	297.5	55.0	352.4	5 573.5	2 135.0	7 708.6	6.3	72.3
July	4 447.8	777.3	5 225.1	273.4	47.5	320.9	5 546.0	2 172.6	7 718.6	5.8	71.9
August	4 395.0	785.9	5 180.9	276.4	64.8	341.3	5 522.2	2 206.5	7 728.7	6.2	71.5
September	4 475.8	768.6	5 244.4	287.3	68.2	355.5	5 599.9	2 138.8	7 738.7	6.3	72.4
October	4 430.8	794.6	5 225.4	265.2	56.3	321.4	5 546.9	2 201.4	7 748.3	5.8	71.6
November	4 450.4	775.3	5 225.7	270.0	56.1	326.1	5 551.8	2 206.0	7 757.8	5.9	71.6
December	4 556.1	767.7	5 323.8	285.8	67.9	353.7	5 677.5	2 089.9	7 767.4	6.2	73.1
<b>2003</b>											
January	4 511.4	736.0	5 247.3	316.7	63.9	380.6	5 627.9	2 151.2	7 779.1	6.8	72.3
February	4 532.8	739.5	5 272.2	309.3	67.1	376.4	5 648.6	2 142.1	7 790.7	6.7	72.5
FEMALES											
<b>2001</b>											
December	2 263.2	1 834.8	4 098.1	185.5	99.5	285.0	4 383.0	3 480.4	7 863.5	6.5	55.7
<b>2002</b>											
January	2 249.0	1 750.1	3 999.1	208.5	96.0	304.5	4 303.7	3 567.7	7 871.4	7.1	54.7
February	2 236.6	1 826.2	4 062.9	204.5	104.9	309.5	4 372.3	3 507.0	7 879.3	7.1	55.5
March	2 239.1	1 853.1	4 092.2	178.3	102.1	280.4	4 372.6	3 514.6	7 887.2	6.4	55.4
April	2 196.6	1 880.7	4 077.2	171.5	88.1	259.6	4 336.8	3 560.7	7 897.5	6.0	54.9
May	2 217.5	1 873.7	4 091.2	166.2	96.0	262.1	4 353.3	3 554.5	7 907.8	6.0	55.1
June	2 196.8	1 921.6	4 118.4	181.5	90.5	272.0	4 390.4	3 527.8	7 918.2	6.2	55.4
July	2 250.8	1 872.1	4 122.9	150.8	86.1	236.9	4 359.8	3 568.9	7 928.7	5.4	55.0
August	2 248.3	1 880.8	4 129.1	164.7	90.1	254.8	4 383.9	3 555.2	7 939.1	5.8	55.2
September	2 304.5	1 898.5	4 203.0	167.4	105.5	273.0	4 475.9	3 473.7	7 949.7	6.1	56.3
October	2 260.9	1 904.2	4 165.2	150.9	97.5	248.4	4 413.6	3 545.8	7 959.4	5.6	55.5
November	2 276.2	1 918.8	4 195.0	166.8	83.7	250.5	4 445.5	3 523.7	7 969.2	5.6	55.8
December	2 354.8	1 912.9	4 267.7	175.0	95.5	270.5	4 538.2	3 440.8	7 979.0	6.0	56.9
<b>2003</b>											
January	2 332.3	1 860.0	4 192.3	191.3	80.9	272.2	4 464.5	3 526.6	7 991.1	6.1	55.9
February	2 335.6	1 908.1	4 243.8	199.4	103.9	303.3	4 547.1	3 456.1	8 003.1	6.7	56.8
PERSONS											
<b>2001</b>											
December	6 764.5	2 549.9	9 314.4	498.7	162.8	661.5	9 975.8	5 540.6	15 516.5	6.6	64.3
<b>2002</b>											
January	6 677.8	2 446.0	9 123.8	561.9	165.3	727.3	9 851.1	5 681.6	15 532.7	7.4	63.4
February	6 681.4	2 549.5	9 230.9	554.5	171.7	726.2	9 957.2	5 591.7	15 548.8	7.3	64.0
March	6 655.8	2 611.8	9 267.6	488.7	173.3	661.9	9 929.5	5 635.5	15 565.0	6.7	63.8
April	6 609.4	2 649.7	9 259.1	472.0	158.1	630.1	9 889.2	5 696.4	15 585.6	6.4	63.5
May	6 663.5	2 620.4	9 283.9	464.6	161.7	626.3	9 910.2	5 695.9	15 606.1	6.3	63.5
June	6 612.8	2 726.7	9 339.5	478.9	145.5	624.4	9 964.0	5 662.8	15 626.7	6.3	63.8
July	6 698.6	2 649.4	9 348.0	424.2	133.6	557.8	9 905.8	5 741.5	15 647.3	5.6	63.3
August	6 643.4	2 666.7	9 310.1	441.1	154.9	596.1	9 906.1	5 761.7	15 667.8	6.0	63.2
September	6 780.3	2 667.1	9 447.4	454.7	173.7	628.5	10 075.9	5 612.5	15 688.4	6.2	64.2
October	6 691.7	2 698.9	9 390.6	416.1	153.8	569.9	9 960.5	5 747.2	15 707.7	5.7	63.4
November	6 726.6	2 694.1	9 420.7	436.8	139.8	576.6	9 997.3	5 729.7	15 727.0	5.8	63.6
December	6 910.9	2 680.7	9 591.5	460.7	163.4	624.1	10 215.7	5 530.7	15 746.4	6.1	64.9
<b>2003</b>											
January	6 843.7	2 596.0	9 439.7	507.9	144.8	652.7	10 092.4	5 677.7	15 770.1	6.5	64.0
February	6 868.4	2 647.6	9 516.0	508.7	170.9	679.7	10 195.7	5 598.1	15 793.8	6.7	64.6

LABOUR FORCE STATUS (AGED 15 AND OVER): **Seasonally adjusted(a)**

Month	EMPLOYED.....			UNEMPLOYED.....					
	Full time '000	Part time '000	Total '000	Looking for f/t work	Looking for p/t work	Total '000	Labour force	Unemp- loyment rate	Partic- ipation rate
				'000	'000		'000	'000	%
<b>MALES</b>									
<b>2001</b>									
December	4 420.0	729.6	5 149.6	312.3	59.4	371.7	5 521.3	6.7	72.1
<b>2002</b>									
January	4 440.7	729.0	5 169.7	321.5	70.0	391.5	5 561.3	7.0	72.6
February	4 432.3	749.3	5 181.6	319.2	61.8	381.0	5 562.7	6.8	72.5
March	4 437.9	754.0	5 191.9	308.3	62.7	371.0	5 562.9	6.7	72.5
April	4 431.3	751.1	5 182.4	305.2	65.3	370.6	5 553.0	6.7	72.2
May	4 467.9	733.4	5 201.4	302.6	63.8	366.3	5 567.7	6.6	72.3
June	4 435.5	775.8	5 211.3	303.8	60.4	364.3	5 575.6	6.5	72.3
July	4 431.6	771.6	5 203.2	292.4	55.0	347.4	5 550.7	6.3	71.9
August	4 440.4	775.5	5 215.8	283.7	67.8	351.4	5 567.3	6.3	72.0
September	4 445.8	769.5	5 215.2	284.1	62.6	346.7	5 561.9	6.2	71.9
October	4 428.0	784.8	5 212.8	277.1	60.9	338.0	5 550.8	6.1	71.6
November	4 455.5	788.6	5 244.2	278.7	63.4	342.1	5 586.3	6.1	72.0
December	4 472.7	784.6	5 257.3	284.8	64.0	348.8	5 606.2	6.2	72.2
<b>2003</b>									
January	4 523.2	772.3	5 295.5	286.9	64.6	351.5	5 646.9	6.2	72.6
February	4 519.9	765.5	5 285.4	282.1	62.1	344.2	5 629.7	6.1	72.3
<b>FEMALES</b>									
<b>2001</b>									
December	2 215.1	1 838.7	4 053.7	180.6	104.2	284.8	4 338.6	6.6	55.2
<b>2002</b>									
January	2 236.0	1 847.9	4 083.9	196.1	104.9	301.1	4 385.0	6.9	55.7
February	2 233.5	1 862.5	4 096.1	180.5	90.3	270.8	4 366.8	6.2	55.4
March	2 243.2	1 854.2	4 097.4	172.2	87.0	259.2	4 356.6	5.9	55.2
April	2 221.1	1 864.1	4 085.2	170.1	83.4	253.5	4 338.6	5.8	54.9
May	2 242.2	1 857.2	4 099.4	159.7	93.1	252.8	4 352.2	5.8	55.0
June	2 224.1	1 887.8	4 111.8	187.5	91.1	278.6	4 390.4	6.3	55.4
July	2 225.7	1 865.0	4 090.7	168.7	97.9	266.6	4 357.4	6.1	55.0
August	2 285.3	1 869.8	4 155.1	174.6	94.1	268.7	4 423.8	6.1	55.7
September	2 272.9	1 862.6	4 135.6	171.2	101.7	272.9	4 408.5	6.2	55.5
October	2 258.6	1 898.5	4 157.1	157.5	101.4	258.9	4 415.9	5.9	55.5
November	2 280.3	1 905.3	4 185.6	176.3	95.7	272.0	4 457.6	6.1	55.9
December	2 307.1	1 917.4	4 224.5	170.8	99.6	270.4	4 494.8	6.0	56.3
<b>2003</b>									
January	2 318.9	1 961.4	4 280.3	179.9	88.3	268.2	4 548.6	5.9	56.9
February	2 332.2	1 945.9	4 278.1	176.1	89.4	265.5	4 543.6	5.8	56.8
<b>PERSONS</b>									
<b>2001</b>									
December	6 635.0	2 568.3	9 203.3	492.9	163.6	656.6	9 859.9	6.7	63.5
<b>2002</b>									
January	6 676.7	2 577.0	9 253.7	517.6	175.0	692.6	9 946.3	7.0	64.0
February	6 665.9	2 611.8	9 277.7	499.7	152.1	651.8	9 929.5	6.6	63.9
March	6 681.1	2 608.1	9 289.3	480.4	149.8	630.2	9 919.5	6.4	63.7
April	6 652.4	2 615.2	9 267.6	475.3	148.7	624.0	9 891.6	6.3	63.5
May	6 710.2	2 590.6	9 300.8	462.2	156.9	619.1	9 919.9	6.2	63.6
June	6 659.5	2 663.6	9 323.1	491.3	151.5	642.8	9 966.0	6.5	63.8
July	6 657.3	2 636.6	9 293.9	461.2	152.9	614.1	9 908.0	6.2	63.3
August	6 725.6	2 645.3	9 370.9	458.3	161.9	620.2	9 991.1	6.2	63.8
September	6 718.7	2 632.1	9 350.8	455.3	164.2	619.6	9 970.4	6.2	63.6
October	6 686.6	2 683.3	9 369.8	434.5	162.3	596.9	9 966.7	6.0	63.5
November	6 735.9	2 693.9	9 429.8	455.0	159.1	614.1	10 043.9	6.1	63.9
December	6 779.8	2 702.0	9 481.8	455.6	163.6	619.2	10 101.0	6.1	64.1
<b>2003</b>									
January	6 842.1	2 733.7	9 575.8	466.8	152.9	619.7	10 195.5	6.1	64.7
February	6 852.1	2 711.4	9 563.5	458.2	151.6	609.7	10 173.3	6.0	64.4

(a) Revised due to annual seasonal reanalysis.

## LABOUR FORCE STATUS (AGED 15 AND OVER): Trend(a)

Month	EMPLOYED.....			UNEMPLOYED.....			Labour force '000	Unemp- loyment rate %	Partic- ipation rate %
	Full time '000	Part time '000	Total '000	Looking for f/t work '000	Looking for p/t work '000	Total '000			
MALES									
<b>2001</b>									
December	4 422.0	733.5	5 155.5	322.4	63.0	385.4	5 540.9	7.0	72.4
<b>2002</b>									
January	4 429.6	736.6	5 166.3	318.5	63.9	382.4	5 548.7	6.9	72.4
February	4 435.8	741.0	5 176.7	314.7	64.2	378.9	5 555.7	6.8	72.4
March	4 440.2	745.8	5 186.0	311.1	63.8	374.9	5 560.9	6.7	72.4
April	4 442.8	750.9	5 193.7	307.3	63.1	370.5	5 564.2	6.7	72.4
May	4 443.1	756.4	5 199.4	303.0	62.4	365.4	5 564.8	6.6	72.3
June	4 441.4	762.0	5 203.4	297.8	61.7	359.4	5 562.8	6.5	72.2
July	4 438.4	768.0	5 206.4	292.1	61.5	353.6	5 559.9	6.4	72.0
August	4 436.3	774.3	5 210.6	287.1	61.7	348.8	5 559.4	6.3	71.9
September	4 438.8	779.2	5 217.9	283.4	62.2	345.7	5 563.6	6.2	71.9
October	4 447.9	781.2	5 229.1	281.5	62.9	344.4	5 573.5	6.2	71.9
November	4 462.8	780.9	5 243.6	281.3	63.3	344.6	5 588.2	6.2	72.0
December	4 479.9	779.4	5 259.3	281.8	63.5	345.3	5 604.6	6.2	72.1
<b>2003</b>									
January	4 497.0	777.3	5 274.3	282.7	63.5	346.2	5 620.5	6.2	72.3
February	4 512.4	774.4	5 286.8	283.7	63.1	346.8	5 633.6	6.2	72.4
FEMALES									
<b>2001</b>									
December	2 231.6	1 835.0	4 066.6	185.1	99.9	285.0	4 351.6	6.5	55.3
<b>2002</b>									
January	2 231.3	1 845.4	4 076.7	182.7	97.4	280.2	4 356.8	6.4	55.4
February	2 230.6	1 854.3	4 084.9	179.4	94.1	273.5	4 358.4	6.3	55.3
March	2 230.4	1 860.6	4 091.1	176.0	90.9	266.9	4 358.0	6.1	55.2
April	2 231.2	1 864.1	4 095.3	173.5	89.1	262.7	4 358.0	6.0	55.2
May	2 233.5	1 866.2	4 099.7	172.1	89.6	261.7	4 361.4	6.0	55.2
June	2 238.0	1 867.4	4 105.4	171.5	91.8	263.3	4 368.7	6.0	55.2
July	2 244.9	1 868.6	4 113.5	171.3	95.0	266.2	4 379.7	6.1	55.2
August	2 254.1	1 872.2	4 126.3	170.9	97.7	268.6	4 394.9	6.1	55.4
September	2 265.0	1 880.0	4 145.0	170.2	99.0	269.2	4 414.2	6.1	55.5
October	2 276.8	1 892.2	4 169.0	170.0	98.6	268.6	4 437.7	6.1	55.8
November	2 289.0	1 907.5	4 196.5	170.8	97.3	268.1	4 464.6	6.0	56.0
December	2 301.3	1 923.6	4 224.9	172.6	95.4	268.0	4 492.9	6.0	56.3
<b>2003</b>									
January	2 313.3	1 938.6	4 251.8	174.8	93.2	268.0	4 519.8	5.9	56.6
February	2 322.1	1 950.8	4 272.9	176.4	91.3	267.6	4 540.5	5.9	56.8
PERSONS									
<b>2001</b>									
December	6 653.6	2 568.5	9 222.0	507.5	162.8	670.4	9 892.4	6.8	63.8
<b>2002</b>									
January	6 660.9	2 582.1	9 242.9	501.3	161.3	662.6	9 905.5	6.7	63.8
February	6 666.3	2 595.3	9 261.6	494.1	158.3	652.4	9 914.1	6.6	63.8
March	6 670.7	2 606.4	9 277.1	487.0	154.7	641.7	9 918.8	6.5	63.7
April	6 674.0	2 615.0	9 289.1	480.9	152.3	633.1	9 922.2	6.4	63.7
May	6 676.5	2 622.6	9 299.1	475.2	151.9	627.1	9 926.2	6.3	63.6
June	6 679.4	2 629.3	9 308.7	469.3	153.5	622.7	9 931.5	6.3	63.6
July	6 683.3	2 636.6	9 319.9	463.4	156.4	619.8	9 939.7	6.2	63.5
August	6 690.4	2 646.4	9 336.8	458.0	159.5	617.5	9 954.3	6.2	63.5
September	6 703.8	2 659.2	9 362.9	453.7	161.2	614.9	9 977.8	6.2	63.6
October	6 724.7	2 673.4	9 398.2	451.5	161.5	613.0	10 011.2	6.1	63.7
November	6 751.8	2 688.4	9 440.1	452.0	160.6	612.6	10 052.8	6.1	63.9
December	6 781.2	2 703.0	9 484.2	454.4	158.9	613.2	10 097.5	6.1	64.1
<b>2003</b>									
January	6 810.3	2 715.8	9 526.1	457.5	156.8	614.2	10 140.4	6.1	64.3
February	6 834.4	2 725.2	9 559.6	460.1	154.3	614.4	10 174.0	6.0	64.5

(a) Revised due to annual seasonal reanalysis.



## UNEMPLOYED PERSONS: Original

Month	NUMBER OF UNEMPLOYED PERSONS.....					UNEMPLOYMENT RATE.....					UNEMPLOYMENT TO POPULATION RATIO	
	Aged 15-19 looking for f/t work	Aged 20 and over looking for f/t work	Total looking for f/t work	Looking for p/t work	Total	Aged 15-19 looking for f/t work	Aged 20 and over looking for f/t work	Total looking for f/t work	Looking for p/t work	Total	Aged 15-19 looking for f/t work	Aged 20 and over looking for f/t work
	'000	'000	'000	'000	'000	%	%	%	%	%	%	%
MALES												
<b>2001</b>												
December	49.5	263.7	313.2	63.3	376.5	23.4	5.7	6.5	8.1	6.7	7.1	3.8
<b>2002</b>												
January	49.5	303.9	353.4	69.3	422.8	24.5	6.6	7.4	9.1	7.6	7.1	4.4
February	50.7	299.3	350.0	66.8	416.8	25.5	6.5	7.3	8.5	7.5	7.3	4.3
March	37.2	273.1	310.3	71.2	381.5	20.2	6.0	6.6	8.6	6.9	5.3	3.9
April	37.9	262.6	300.5	70.0	370.5	20.9	5.8	6.4	8.3	6.7	5.4	3.8
May	34.5	263.9	298.5	65.7	364.1	19.7	5.8	6.3	8.1	6.6	4.9	3.8
June	33.1	264.4	297.5	55.0	352.4	18.9	5.8	6.3	6.4	6.3	4.7	3.8
July	31.1	242.3	273.4	47.5	320.9	17.1	5.3	5.8	5.8	5.8	4.5	3.5
August	30.7	245.7	276.4	64.8	341.3	18.7	5.5	5.9	7.6	6.2	4.4	3.5
September	29.8	257.5	287.3	68.2	355.5	17.8	5.6	6.0	8.2	6.3	4.3	3.7
October	33.7	231.5	265.2	56.3	321.4	19.7	5.1	5.6	6.6	5.8	4.8	3.3
November	34.6	235.4	270.0	56.1	326.1	20.9	5.2	5.7	6.7	5.9	4.9	3.3
December	44.7	241.0	285.8	67.9	353.7	21.7	5.2	5.9	8.1	6.2	6.4	3.4
<b>2003</b>												
January	50.5	266.1	316.7	63.9	380.6	24.5	5.8	6.6	8.0	6.8	7.2	3.8
February	41.7	267.6	309.3	67.1	376.4	21.4	5.8	6.4	8.3	6.7	5.9	3.8
FEMALES												
<b>2001</b>												
December	34.6	150.9	185.5	99.5	285.0	27.3	6.5	7.6	5.1	6.5	5.2	2.1
<b>2002</b>												
January	37.7	170.8	208.5	96.0	304.5	28.4	7.3	8.5	5.2	7.1	5.7	2.4
February	31.3	173.2	204.5	104.9	309.5	26.9	7.4	8.4	5.4	7.1	4.7	2.4
March	30.7	147.6	178.3	102.1	280.4	29.5	6.4	7.4	5.2	6.4	4.6	2.0
April	25.7	145.7	171.5	88.1	259.6	26.0	6.4	7.2	4.5	6.0	3.9	2.0
May	28.7	137.4	166.2	96.0	262.1	27.6	6.0	7.0	4.9	6.0	4.3	1.9
June	30.5	150.9	181.5	90.5	272.0	29.3	6.6	7.6	4.5	6.2	4.6	2.1
July	22.0	128.8	150.8	86.1	236.9	21.0	5.6	6.3	4.4	5.4	3.3	1.8
August	24.1	140.6	164.7	90.1	254.8	24.8	6.1	6.8	4.6	5.8	3.6	1.9
September	24.4	143.1	167.4	105.5	273.0	24.7	6.0	6.8	5.3	6.1	3.6	2.0
October	23.9	127.0	150.9	97.5	248.4	23.8	5.5	6.3	4.9	5.6	3.6	1.7
November	25.7	141.1	166.8	83.7	250.5	24.6	6.0	6.8	4.2	5.6	3.8	1.9
December	28.1	146.9	175.0	95.5	270.5	23.3	6.1	6.9	4.8	6.0	4.2	2.0
<b>2003</b>												
January	35.9	155.3	191.3	80.9	272.2	27.5	6.5	7.6	4.2	6.1	5.4	2.1
February	32.7	166.8	199.4	103.9	303.3	27.3	6.9	7.9	5.2	6.7	4.9	2.3
PERSONS												
<b>2001</b>												
December	84.1	414.6	498.7	162.8	661.5	24.9	6.0	6.9	6.0	6.6	6.2	2.9
<b>2002</b>												
January	87.2	474.7	561.9	165.3	727.3	26.1	6.9	7.8	6.3	7.4	6.4	3.4
February	82.0	472.5	554.5	171.7	726.2	26.0	6.8	7.7	6.3	7.3	6.0	3.3
March	67.9	420.8	488.7	173.3	661.9	23.6	6.1	6.8	6.2	6.7	5.0	3.0
April	63.6	408.3	472.0	158.1	630.1	22.7	6.0	6.7	5.6	6.4	4.7	2.9
May	63.3	401.4	464.6	161.7	626.3	22.6	5.9	6.5	5.8	6.3	4.6	2.8
June	63.6	415.3	478.9	145.5	624.4	22.8	6.1	6.8	5.1	6.3	4.7	2.9
July	53.1	371.1	424.2	133.6	557.8	18.6	5.4	6.0	4.8	5.6	3.9	2.6
August	54.8	386.4	441.1	154.9	596.1	20.9	5.7	6.2	5.5	6.0	4.0	2.7
September	54.2	400.6	454.7	173.7	628.5	20.3	5.7	6.3	6.1	6.2	4.0	2.8
October	57.6	358.5	416.1	153.8	569.9	21.2	5.2	5.9	5.4	5.7	4.2	2.5
November	60.3	376.5	436.8	139.8	576.6	22.3	5.5	6.1	4.9	5.8	4.4	2.6
December	72.8	387.9	460.7	163.4	624.1	22.3	5.5	6.2	5.7	6.1	5.3	2.7
<b>2003</b>												
January	86.5	421.4	507.9	144.8	652.7	25.6	6.0	6.9	5.3	6.5	6.3	2.9
February	74.4	434.4	508.7	170.9	679.7	23.7	6.1	6.9	6.1	6.7	5.4	3.0

## UNEMPLOYED PERSONS: Seasonally adjusted(a)

Month	NUMBER OF UNEMPLOYED PERSONS....					UNEMPLOYMENT RATE.....					UNEMPLOYMENT TO POPULATION RATIO	
	Aged 15-19 looking for f/t work '000	Aged 20 and over looking for f/t work '000	Total looking for f/t work '000	Looking for p/t work '000	Total '000	Aged 15-19 looking for f/t work %	Aged 20 and over looking for f/t work %	Total looking for f/t work %	Looking for p/t work %	Total %	Aged 15-19 looking for f/t work %	Aged 20 and over looking for f/t work %
MALES												
<b>2001</b>												
December	41.4	270.9	312.3	59.4	371.7	22.2	6.0	6.6	7.5	6.7	5.9	3.9
<b>2002</b>												
January	38.8	282.7	321.5	70.0	391.5	21.3	6.2	6.8	8.8	7.0	5.6	4.1
February	44.1	275.1	319.2	61.8	381.0	23.4	6.0	6.7	7.6	6.8	6.3	3.9
March	36.9	271.4	308.3	62.7	371.0	19.7	6.0	6.5	7.7	6.7	5.3	3.9
April	38.5	266.7	305.2	65.3	370.6	21.1	5.9	6.4	8.0	6.7	5.5	3.8
May	37.0	265.5	302.6	63.8	366.3	20.1	5.8	6.3	8.0	6.6	5.3	3.8
June	35.2	268.6	303.8	60.4	364.3	19.6	5.9	6.4	7.2	6.5	5.0	3.8
July	35.0	257.4	292.4	55.0	347.4	19.7	5.7	6.2	6.7	6.3	5.0	3.7
August	35.7	247.9	283.7	67.8	351.4	20.2	5.5	6.0	8.0	6.3	5.1	3.5
September	33.3	250.8	284.1	62.6	346.7	19.1	5.5	6.0	7.5	6.2	4.8	3.6
October	36.8	240.3	277.1	60.9	338.0	20.6	5.3	5.9	7.2	6.1	5.3	3.4
November	36.3	242.4	278.7	63.4	342.1	20.6	5.3	5.9	7.4	6.1	5.2	3.4
December	37.5	247.3	284.8	64.0	348.8	20.6	5.4	6.0	7.5	6.2	5.4	3.5
<b>2003</b>												
January	39.5	247.4	286.9	64.6	351.5	21.2	5.4	6.0	7.7	6.2	5.6	3.5
February	36.1	246.0	282.1	62.1	344.2	19.5	5.3	5.9	7.5	6.1	5.2	3.5
FEMALES												
<b>2001</b>												
December	28.1	152.6	180.6	104.2	284.8	25.7	6.7	7.5	5.4	6.6	4.2	2.1
<b>2002</b>												
January	31.3	164.8	196.1	104.9	301.1	27.8	7.1	8.1	5.4	6.9	4.7	2.3
February	28.2	152.2	180.5	90.3	270.8	26.2	6.6	7.5	4.6	6.2	4.2	2.1
March	30.5	141.7	172.2	87.0	259.2	28.1	6.1	7.1	4.5	5.9	4.6	2.0
April	26.8	143.2	170.1	83.4	253.5	26.1	6.3	7.1	4.3	5.8	4.0	2.0
May	27.7	132.0	159.7	93.1	252.8	25.7	5.8	6.6	4.8	5.8	4.1	1.8
June	32.9	154.6	187.5	91.1	278.6	29.5	6.7	7.8	4.6	6.3	4.9	2.1
July	24.0	144.8	168.7	97.9	266.6	23.2	6.3	7.0	5.0	6.1	3.6	2.0
August	27.6	147.0	174.6	94.1	268.7	25.6	6.2	7.1	4.8	6.1	4.1	2.0
September	27.2	144.0	171.2	101.7	272.9	25.7	6.2	7.0	5.2	6.2	4.1	2.0
October	26.5	130.9	157.5	101.4	258.9	25.2	5.7	6.5	5.1	5.9	4.0	1.8
November	27.5	148.9	176.3	95.7	272.0	25.4	6.3	7.2	4.8	6.1	4.1	2.0
December	22.8	147.9	170.8	99.6	270.4	21.8	6.2	6.9	4.9	6.0	3.4	2.0
<b>2003</b>												
January	29.7	150.2	179.9	88.3	268.2	26.9	6.3	7.2	4.3	5.9	4.4	2.1
February	29.5	146.6	176.1	89.4	265.5	26.7	6.1	7.0	4.4	5.8	4.4	2.0
PERSONS												
<b>2001</b>												
December	69.4	423.5	492.9	163.6	656.6	23.5	6.2	6.9	6.0	6.7	5.1	3.0
<b>2002</b>												
January	70.1	447.6	517.6	175.0	692.6	23.8	6.5	7.2	6.4	7.0	5.1	3.2
February	72.3	427.4	499.7	152.1	651.8	24.4	6.2	7.0	5.5	6.6	5.3	3.0
March	67.4	413.0	480.4	149.8	630.2	22.8	6.0	6.7	5.4	6.4	4.9	2.9
April	65.4	409.9	475.3	148.7	624.0	22.9	6.0	6.7	5.4	6.3	4.8	2.9
May	64.7	397.6	462.2	156.9	619.1	22.2	5.8	6.4	5.7	6.2	4.7	2.8
June	68.1	423.2	491.3	151.5	642.8	23.4	6.2	6.9	5.4	6.5	5.0	3.0
July	59.0	402.2	461.2	152.9	614.1	21.0	5.9	6.5	5.5	6.2	4.3	2.8
August	63.3	394.9	458.3	161.9	620.2	22.3	5.7	6.4	5.8	6.2	4.6	2.8
September	60.5	394.8	455.3	164.2	619.6	21.6	5.7	6.3	5.9	6.2	4.4	2.8
October	63.3	371.2	434.5	162.3	596.9	22.3	5.4	6.1	5.7	6.0	4.6	2.6
November	63.8	391.2	455.0	159.1	614.1	22.4	5.7	6.3	5.6	6.1	4.7	2.7
December	60.3	395.2	455.6	163.6	619.2	21.0	5.7	6.3	5.7	6.1	4.4	2.7
<b>2003</b>												
January	69.2	397.6	466.8	152.9	619.7	23.3	5.7	6.4	5.3	6.1	5.0	2.8
February	65.7	392.5	458.2	151.6	609.7	22.2	5.6	6.3	5.3	6.0	4.8	2.7

(a) Revised due to annual seasonal reanalysis.

## UNEMPLOYED PERSONS: Trend(a)

Month	NUMBER OF UNEMPLOYED PERSONS.....					UNEMPLOYMENT RATE.....					UNEMPLOYMENT TO POPULATION RATIO	
	<i>Aged 15-19 looking for f/t work</i>	<i>Aged 20 and over looking for f/t work</i>	<i>Total looking for f/t work</i>	<i>Looking for p/t work</i>	<i>Total</i>	<i>Aged 15-19 looking for f/t work</i>	<i>Aged 20 and over looking for f/t work</i>	<i>Total looking for f/t work</i>	<i>Looking for p/t work</i>	<i>Total</i>	<i>Aged 15-19 looking for f/t work</i>	<i>Aged 20 and over looking for f/t work</i>
	'000	'000	'000	'000	'000	%	%	%	%	%	%	%
MALES												
<b>2001</b>												
December	43.1	279.4	322.4	63.0	385.4	23.1	6.1	6.8	7.9	7.0	6.2	4.0
<b>2002</b>												
January	41.5	277.0	318.5	63.9	382.4	22.4	6.1	6.7	8.0	6.9	6.0	4.0
February	40.0	274.7	314.7	64.2	378.9	21.6	6.0	6.6	8.0	6.8	5.7	3.9
March	38.9	272.2	311.1	63.8	374.9	21.0	6.0	6.5	7.9	6.7	5.6	3.9
April	37.8	269.5	307.3	63.1	370.5	20.6	5.9	6.5	7.8	6.7	5.4	3.9
May	36.8	266.3	303.0	62.4	365.4	20.2	5.8	6.4	7.6	6.6	5.3	3.8
June	35.8	261.9	297.8	61.7	359.4	19.9	5.7	6.3	7.5	6.5	5.1	3.7
July	35.1	257.0	292.1	61.5	353.6	19.7	5.6	6.2	7.4	6.4	5.0	3.7
August	34.9	252.2	287.1	61.7	348.8	19.8	5.5	6.1	7.4	6.3	5.0	3.6
September	35.3	248.2	283.4	62.2	345.7	20.0	5.5	6.0	7.4	6.2	5.1	3.5
October	35.9	245.6	281.5	62.9	344.4	20.2	5.4	6.0	7.4	6.2	5.1	3.5
November	36.6	244.7	281.3	63.3	344.6	20.4	5.4	5.9	7.5	6.2	5.2	3.5
December	37.2	244.7	281.8	63.5	345.3	20.5	5.3	5.9	7.5	6.2	5.3	3.5
<b>2003</b>												
January	37.6	245.1	282.7	63.5	346.2	20.5	5.3	5.9	7.6	6.2	5.4	3.5
February	37.9	245.8	283.7	63.1	346.8	20.5	5.3	5.9	7.5	6.2	5.4	3.5
FEMALES												
<b>2001</b>												
December	30.0	155.1	185.1	99.9	285.0	26.5	6.7	7.7	5.2	6.5	4.5	2.2
<b>2002</b>												
January	29.6	153.1	182.7	97.4	280.2	26.8	6.6	7.6	5.0	6.4	4.4	2.1
February	29.3	150.1	179.4	94.1	273.5	27.0	6.5	7.4	4.8	6.3	4.4	2.1
March	29.0	147.0	176.0	90.9	266.9	27.0	6.4	7.3	4.7	6.1	4.4	2.0
April	28.8	144.7	173.5	89.1	262.7	26.9	6.3	7.2	4.6	6.0	4.3	2.0
May	28.5	143.7	172.1	89.6	261.7	26.7	6.2	7.2	4.6	6.0	4.3	2.0
June	28.1	143.4	171.5	91.8	263.3	26.4	6.2	7.1	4.7	6.0	4.2	2.0
July	27.7	143.6	171.3	95.0	266.2	26.0	6.2	7.1	4.8	6.1	4.1	2.0
August	27.2	143.7	170.9	97.7	268.6	25.5	6.2	7.0	5.0	6.1	4.1	2.0
September	26.7	143.5	170.2	99.0	269.2	25.1	6.2	7.0	5.0	6.1	4.0	2.0
October	26.5	143.6	170.0	98.6	268.6	24.9	6.1	6.9	5.0	6.1	4.0	2.0
November	26.6	144.2	170.8	97.3	268.1	24.9	6.1	6.9	4.9	6.0	4.0	2.0
December	27.0	145.6	172.6	95.4	268.0	25.1	6.2	7.0	4.7	6.0	4.0	2.0
<b>2003</b>												
January	27.6	147.2	174.8	93.2	268.0	25.4	6.2	7.0	4.6	5.9	4.1	2.0
February	28.0	148.4	176.4	91.3	267.6	25.6	6.2	7.1	4.5	5.9	4.2	2.0
PERSONS												
<b>2001</b>												
December	73.0	434.5	507.5	162.8	670.4	24.4	6.3	7.1	6.0	6.8	5.4	3.1
<b>2002</b>												
January	71.2	430.1	501.3	161.3	662.6	24.0	6.3	7.0	5.9	6.7	5.2	3.0
February	69.3	424.8	494.1	158.3	652.4	23.6	6.2	6.9	5.7	6.6	5.1	3.0
March	67.9	419.1	487.0	154.7	641.7	23.2	6.1	6.8	5.6	6.5	5.0	3.0
April	66.6	414.3	480.9	152.3	633.1	22.9	6.0	6.7	5.5	6.4	4.9	2.9
May	65.3	409.9	475.2	151.9	627.1	22.6	6.0	6.6	5.5	6.3	4.8	2.9
June	63.9	405.3	469.3	153.5	622.7	22.3	5.9	6.6	5.5	6.3	4.7	2.8
July	62.8	400.6	463.4	156.4	619.8	22.1	5.8	6.5	5.6	6.2	4.6	2.8
August	62.1	395.9	458.0	159.5	617.5	21.9	5.8	6.4	5.7	6.2	4.5	2.8
September	62.0	391.7	453.7	161.2	614.9	21.9	5.7	6.3	5.7	6.2	4.5	2.7
October	62.3	389.2	451.5	161.5	613.0	22.0	5.6	6.3	5.7	6.1	4.6	2.7
November	63.2	388.9	452.0	160.6	612.6	22.1	5.6	6.3	5.6	6.1	4.6	2.7
December	64.1	390.2	454.4	158.9	613.2	22.2	5.6	6.3	5.6	6.1	4.7	2.7
<b>2003</b>												
January	65.2	392.3	457.5	156.8	614.2	22.3	5.6	6.3	5.5	6.1	4.8	2.7
February	65.9	394.2	460.1	154.3	614.4	22.4	5.6	6.3	5.4	6.0	4.8	2.7

(a) Revised due to annual seasonal reanalysis.

PERSONS AGED 15 TO 19, Education and Labour Force: **Original**—February 2003

	EMPLOYED.....			UNEMPLOYED.....			Labour force	Not in labour force	Civilian population aged 15-19	Unemployment rate	Participation rate
	Full time	Part time	Total	Looking for f/t work	Looking for p/t work	Total					
	'000	'000	'000	'000	'000	'000	'000	'000	'000	%	%
ATTENDING NEITHER SCHOOL NOR A TERTIARY EDUCATIONAL INSTITUTION FULL TIME											
Males	143.5	47.1	190.6	35.0	* 4.0	39.0	229.5	25.7	255.2	17.0	89.9
Females	76.8	59.8	136.6	26.5	* 1.7	28.2	164.9	30.8	195.6	17.1	84.3
Persons	220.2	106.9	327.2	61.5	5.7	67.2	394.4	56.5	450.9	17.0	87.5
ATTENDING A TERTIARY EDUCATIONAL INSTITUTION FULL TIME											
Males	9.3	57.1	66.4	5.0	12.4	17.5	83.8	40.8	124.7	20.8	67.3
Females	9.6	84.6	94.2	* 4.2	14.0	18.2	112.4	42.9	155.3	16.2	72.4
Persons	18.9	141.7	160.6	9.2	26.4	35.6	196.2	83.8	280.0	18.2	70.1
ATTENDING SCHOOL											
Males	* 0.3	85.7	86.0	* 1.7	22.2	23.9	109.9	211.6	321.5	21.7	34.2
Females	* 0.4	124.0	124.5	* 1.9	20.5	22.5	147.0	173.8	320.7	15.3	45.8
Persons	* 0.8	209.7	210.5	* 3.6	42.7	46.4	256.9	385.3	642.2	18.1	40.0
TOTAL											
Males	153.1	189.9	343.0	41.7	38.6	80.3	423.3	278.1	701.4	19.0	60.4
Females	86.8	268.5	355.3	32.7	36.2	68.9	424.2	247.5	671.7	16.2	63.2
<b>Persons</b>	<b>239.9</b>	<b>458.3</b>	<b>698.3</b>	<b>74.4</b>	<b>74.8</b>	<b>149.2</b>	<b>847.5</b>	<b>525.6</b>	<b>1 373.1</b>	<b>17.6</b>	<b>61.7</b>

	EMPLOYED.....			UNEMPLOYED.....							Unemp- loyment rate %	Partic- ipation rate %
	Full time '000	Part time '000	Total '000	Looking for f/t work	Looking for p/t work	Total '000	Labour force '000	Not in labour force '000	Civilian population aged 15 and over '000			
				'000	'000							
MALES												
New South Wales	1 515.9	250.6	1 766.5	104.1	17.0	121.1	1 887.5	730.5	2 618.1	6.4	72.1	
Victoria	1 142.2	178.4	1 320.6	68.1	16.5	84.5	1 405.2	549.4	1 954.5	6.0	71.9	
Queensland	845.3	146.8	992.1	58.9	17.2	76.0	1 068.2	394.1	1 462.3	7.1	73.0	
South Australia	338.4	50.6	389.0	25.6	5.8	31.5	420.5	181.2	601.6	7.5	69.9	
Western Australia	474.0	78.0	552.0	33.0	6.9	39.9	591.9	184.2	776.1	6.7	76.3	
Tasmania	95.1	14.2	109.3	12.5	1.2	13.7	123.0	59.5	182.5	11.1	67.4	
Northern Territory	44.1	9.6	53.7	3.0	1.0	4.0	57.7	16.0	73.7	7.0	78.3	
Australian Capital Territory	77.9	11.2	89.0	4.2	1.5	5.6	94.7	27.3	122.0	6.0	77.6	
<b>Australia</b>	<b>4 532.8</b>	<b>739.5</b>	<b>5 272.2</b>	<b>309.3</b>	<b>67.1</b>	<b>376.4</b>	<b>5 648.6</b>	<b>2 142.1</b>	<b>7 790.7</b>	<b>6.7</b>	<b>72.5</b>	
FEMALES												
New South Wales	799.3	590.4	1 389.7	70.2	35.7	105.8	1 495.5	1 192.6	2 688.1	7.1	55.6	
Victoria	591.3	494.3	1 085.7	38.7	22.6	61.4	1 147.0	875.8	2 022.9	5.4	56.7	
Queensland	432.2	375.3	807.5	50.9	23.7	74.6	882.1	617.3	1 499.4	8.5	58.8	
South Australia	168.6	150.0	318.6	12.7	7.2	19.9	338.5	287.9	626.3	5.9	54.0	
Western Australia	216.3	210.1	426.5	17.3	9.4	26.8	453.3	324.0	777.2	5.9	58.3	
Tasmania	46.8	43.0	89.8	5.8	2.4	8.2	98.0	95.5	193.5	8.4	50.7	
Northern Territory	28.2	15.7	43.9	1.8	* 0.8	2.7	46.6	21.7	68.3	5.7	68.2	
Australian Capital Territory	52.9	29.2	82.2	1.9	2.0	3.9	86.1	41.3	127.4	4.5	67.5	
<b>Australia</b>	<b>2 335.6</b>	<b>1 908.1</b>	<b>4 243.8</b>	<b>199.4</b>	<b>103.9</b>	<b>303.3</b>	<b>4 547.1</b>	<b>3 456.1</b>	<b>8 003.1</b>	<b>6.7</b>	<b>56.8</b>	
PERSONS												
New South Wales	2 315.1	841.0	3 156.1	174.2	52.7	226.9	3 383.0	1 923.1	5 306.1	6.7	63.8	
Victoria	1 733.6	672.7	2 406.3	106.8	39.1	145.9	2 552.2	1 425.2	3 977.4	5.7	64.2	
Queensland	1 277.5	522.1	1 799.6	109.8	40.8	150.7	1 950.3	1 011.4	2 961.7	7.7	65.8	
South Australia	507.0	200.6	707.6	38.3	13.0	51.3	758.9	469.0	1 227.9	6.8	61.8	
Western Australia	690.3	288.2	978.5	50.4	16.3	66.7	1 045.2	508.1	1 553.3	6.4	67.3	
Tasmania	141.9	57.2	199.1	18.3	3.7	21.9	221.0	155.0	376.0	9.9	58.8	
Northern Territory	72.2	25.3	97.6	4.8	1.8	6.7	104.3	37.7	142.0	6.4	73.4	
Australian Capital Territory	130.8	40.4	171.2	6.1	3.5	9.5	180.8	68.7	249.4	5.3	72.5	
<b>Australia</b>	<b>6 868.4</b>	<b>2 647.6</b>	<b>9 516.0</b>	<b>508.7</b>	<b>170.9</b>	<b>679.7</b>	<b>10 195.7</b>	<b>5 598.1</b>	<b>15 793.8</b>	<b>6.7</b>	<b>64.6</b>	

UNEMPLOYED PERSONS—New South Wales, Victoria and Queensland: **Original**

Month	NUMBER OF UNEMPLOYED PERSONS.....					UNEMPLOYMENT RATE.....					UNEMPLOYMENT TO POPULATION RATIO	
	Aged 15-19 looking for f/t work	Aged 20 and over looking for f/t work	Total looking for f/t work	Looking for p/t work	Total	Aged 15-19 looking for f/t work	Aged 20 and over looking for f/t work	Total looking for f/t work	Looking for p/t work	Total	Aged 15-19 looking for f/t work	Aged 20 and over looking for f/t work
	'000	'000	'000	'000	'000	%	%	%	%	%	%	%
NEW SOUTH WALES												
<b>2001</b>												
December	21.9	128.2	150.1	50.0	200.1	22.3	5.5	6.1	5.9	6.1	4.9	2.7
<b>2002</b>												
January	26.5	147.2	173.6	48.2	221.8	25.7	6.3	7.1	5.9	6.8	5.9	3.1
February	21.6	146.3	167.9	50.5	218.4	22.3	6.2	6.9	5.9	6.6	4.8	3.1
March	21.6	128.1	149.8	59.9	209.7	24.7	5.5	6.2	6.9	6.4	4.8	2.7
April	23.8	124.6	148.3	48.4	196.7	28.4	5.4	6.2	5.4	6.0	5.3	2.6
May	19.3	128.9	148.2	48.2	196.3	21.7	5.5	6.1	5.6	6.0	4.3	2.7
June	21.6	130.9	152.5	45.9	198.4	25.0	5.7	6.4	5.0	6.0	4.8	2.7
July	16.2	119.7	135.8	45.8	181.6	18.7	5.1	5.6	5.2	5.5	3.6	2.5
August	15.2	118.8	134.0	40.9	174.9	19.1	5.1	5.6	4.7	5.4	3.4	2.5
September	15.9	130.7	146.6	52.9	199.5	18.8	5.5	6.0	6.0	6.0	3.5	2.7
October	19.7	107.1	126.8	44.2	171.0	23.9	4.7	5.3	4.9	5.2	4.4	2.2
November	19.1	128.5	147.6	44.2	191.8	22.6	5.5	6.1	4.9	5.8	4.2	2.7
December	24.0	133.3	157.3	46.3	203.6	23.1	5.6	6.3	5.2	6.0	5.3	2.8
<b>2003</b>												
January	28.1	136.5	164.6	45.4	210.0	25.9	5.8	6.7	5.2	6.3	6.2	2.8
February	21.6	152.7	174.2	52.7	226.9	21.1	6.4	7.0	5.9	6.7	4.8	3.1
VICTORIA												
<b>2001</b>												
December	20.3	97.6	117.9	43.3	161.2	26.1	5.5	6.4	6.5	6.4	6.1	2.7
<b>2002</b>												
January	15.8	109.3	125.1	45.2	170.2	22.2	6.3	6.9	6.8	6.8	4.8	3.1
February	15.3	112.7	128.0	45.9	173.9	23.6	6.4	7.1	6.7	7.0	4.6	3.1
March	14.3	102.1	116.5	39.7	156.2	23.5	5.9	6.5	5.6	6.2	4.3	2.8
April	11.7	92.0	103.7	40.1	143.8	20.5	5.3	5.8	5.7	5.8	3.5	2.6
May	12.3	88.6	100.9	41.3	142.2	22.0	5.1	5.7	5.8	5.7	3.7	2.5
June	11.1	106.9	118.0	32.1	150.1	19.3	6.2	6.6	4.5	6.0	3.3	3.0
July	9.5	83.3	92.8	31.3	124.1	15.8	4.8	5.2	4.5	5.0	2.9	2.3
August	10.8	96.8	107.5	40.3	147.8	19.7	5.6	6.0	5.6	5.9	3.2	2.7
September	9.8	96.3	106.1	45.4	151.5	17.9	5.5	5.8	6.3	6.0	2.9	2.7
October	11.6	87.3	98.9	39.7	138.7	19.4	5.1	5.6	5.5	5.5	3.5	2.4
November	14.1	88.0	102.1	31.3	133.4	23.3	5.1	5.7	4.4	5.3	4.2	2.4
December	15.0	92.5	107.5	38.1	145.7	21.4	5.2	5.8	5.3	5.6	4.5	2.5
<b>2003</b>												
January	15.3	101.9	117.2	29.7	146.9	23.5	5.7	6.4	4.3	5.8	4.6	2.8
February	10.9	95.9	106.8	39.1	145.9	18.1	5.4	5.8	5.5	5.7	3.2	2.6
QUEENSLAND												
<b>2001</b>												
December	22.5	94.8	117.3	35.4	152.7	29.5	7.3	8.6	6.7	8.0	8.5	3.6
<b>2002</b>												
January	20.0	108.0	128.0	32.0	160.0	27.9	8.4	9.4	6.4	8.6	7.5	4.1
February	25.0	106.3	131.3	36.4	167.7	31.5	8.2	9.5	7.0	8.8	9.4	4.1
March	16.3	97.8	114.1	37.7	151.8	22.7	7.6	8.4	7.1	8.0	6.1	3.7
April	12.5	95.6	108.1	37.6	145.7	18.3	7.5	8.0	7.1	7.8	4.7	3.6
May	14.7	89.5	104.2	38.2	142.4	22.6	7.0	7.8	7.0	7.6	5.5	3.4
June	15.0	88.8	103.8	35.5	139.3	23.4	6.9	7.7	6.5	7.3	5.6	3.4
July	13.3	80.3	93.6	30.2	123.9	19.8	6.3	7.0	5.7	6.6	5.0	3.0
August	13.4	79.4	92.8	36.7	129.5	21.3	6.3	7.0	6.7	6.9	5.0	3.0
September	13.6	78.4	91.9	39.7	131.7	22.7	6.0	6.8	7.1	6.9	5.1	2.9
October	13.7	77.2	90.9	36.5	127.4	21.5	6.0	6.7	6.6	6.7	5.1	2.9
November	11.8	76.6	88.4	34.9	123.3	20.9	5.9	6.6	6.3	6.5	4.4	2.9
December	17.6	77.3	94.9	41.9	136.9	23.4	6.0	6.9	7.4	7.1	6.6	2.9
<b>2003</b>												
January	20.5	85.5	106.0	33.8	139.7	26.2	6.5	7.6	6.4	7.3	7.6	3.2
February	22.0	87.8	109.8	40.8	150.7	30.8	6.7	7.9	7.3	7.7	8.2	3.3

UNEMPLOYED PERSONS—South Australia, Western Australia and Tasmania: **Original**

Month	NUMBER OF UNEMPLOYED PERSONS.....					UNEMPLOYMENT RATE.....					UNEMPLOYMENT TO POPULATION RATIO	
	Aged 15-19 looking for f/t work	Aged 20 and over looking for f/t work	Total looking for f/t work	Looking for p/t work	Total	Aged 15-19 looking for f/t work	Aged 20 and over looking for f/t work	Total looking for f/t work	Looking for p/t work	Total	Aged 15-19 looking for f/t work	Aged 20 and over looking for f/t work
	'000	'000	'000	'000	'000	%	%	%	%	%	%	%
SOUTH AUSTRALIA												
<b>2001</b>												
December	7.1	32.7	39.7	12.5	52.2	27.2	6.6	7.6	5.6	7.0	6.8	2.9
<b>2002</b>												
January	9.4	34.1	43.5	12.7	56.3	33.0	7.0	8.4	5.9	7.7	9.1	3.1
February	7.8	37.6	45.5	11.5	56.9	33.8	7.6	8.8	5.1	7.7	7.6	3.4
March	5.1	33.0	38.1	11.9	50.0	26.4	6.8	7.5	5.1	6.8	4.9	3.0
April	6.5	32.4	38.8	9.8	48.6	30.0	6.7	7.7	4.1	6.5	6.3	2.9
May	6.7	32.9	39.6	10.9	50.5	32.2	6.7	7.7	4.8	6.8	6.5	3.0
June	5.8	32.5	38.3	11.1	49.4	28.3	6.7	7.6	4.7	6.7	5.6	2.9
July	4.3	31.4	35.7	8.7	44.5	20.8	6.4	7.0	3.9	6.1	4.2	2.8
August	4.5	33.0	37.6	11.3	48.9	21.8	6.7	7.3	5.1	6.7	4.4	3.0
September	5.4	32.1	37.5	10.6	48.1	24.0	6.5	7.2	4.6	6.4	5.2	2.9
October	4.4	29.8	34.1	11.0	45.1	19.9	6.1	6.7	4.8	6.1	4.2	2.7
November	4.3	29.5	33.8	9.8	43.7	19.3	6.0	6.6	4.3	5.9	4.1	2.6
December	5.1	25.9	30.9	10.9	41.9	20.4	5.1	5.8	4.9	5.6	4.9	2.3
<b>2003</b>												
January	7.2	31.3	38.5	10.8	49.3	25.9	6.1	7.2	5.1	6.6	7.0	2.8
February	6.1	32.2	38.3	13.0	51.3	24.2	6.2	7.0	6.1	6.8	5.9	2.9
WESTERN AUSTRALIA												
<b>2001</b>												
December	8.0	39.7	47.7	13.5	61.2	19.5	5.8	6.6	4.6	6.0	5.6	2.9
<b>2002</b>												
January	9.4	52.2	61.6	17.7	79.3	23.0	7.6	8.4	6.3	7.8	6.6	3.8
February	7.9	48.0	55.9	18.0	73.9	23.0	6.9	7.7	6.0	7.2	5.6	3.5
March	6.6	39.6	46.1	15.3	61.5	20.6	5.9	6.6	5.0	6.1	4.6	2.9
April	6.6	42.6	49.2	15.0	64.2	19.4	6.2	6.9	5.0	6.3	4.6	3.1
May	7.7	40.7	48.3	15.7	64.1	22.4	6.0	6.7	5.4	6.4	5.4	2.9
June	6.8	35.8	42.6	13.9	56.6	18.9	5.4	6.1	4.4	5.6	4.8	2.6
July	6.8	36.6	43.4	11.7	55.1	19.4	5.5	6.2	3.8	5.4	4.8	2.6
August	7.3	36.7	44.0	18.7	62.8	24.8	5.4	6.2	6.0	6.2	5.1	2.6
September	6.2	42.5	48.7	17.0	65.7	20.6	6.2	6.8	5.4	6.3	4.4	3.0
October	4.6	37.4	42.0	15.1	57.1	15.4	5.5	5.9	4.8	5.6	3.2	2.7
November	7.1	36.0	43.1	13.6	56.8	22.5	5.3	6.1	4.3	5.6	5.0	2.6
December	6.3	39.2	45.5	17.6	63.2	17.9	5.6	6.2	5.6	6.0	4.4	2.8
<b>2003</b>												
January	10.6	43.6	54.2	16.3	70.5	26.1	6.2	7.3	5.4	6.7	7.4	3.1
February	8.3	42.1	50.4	16.3	66.7	22.2	6.0	6.8	5.4	6.4	5.8	3.0
TASMANIA												
<b>2001</b>												
December	2.3	13.4	15.7	3.0	18.7	22.6	9.1	10.0	4.7	8.5	6.8	3.9
<b>2002</b>												
January	3.2	13.9	17.1	3.8	20.9	31.1	9.5	11.0	6.2	9.6	9.4	4.1
February	2.4	13.5	15.9	3.8	19.7	27.1	9.3	10.3	6.0	9.0	7.0	4.0
March	2.2	11.9	14.1	3.6	17.7	22.5	8.3	9.2	5.8	8.2	6.3	3.5
April	1.7	12.0	13.8	2.8	16.6	19.9	8.6	9.3	4.3	7.7	5.1	3.5
May	1.8	12.3	14.1	3.4	17.4	20.1	8.8	9.5	5.0	8.1	5.2	3.6
June	1.8	12.9	14.7	2.9	17.6	21.3	9.3	10.0	4.2	8.1	5.2	3.8
July	2.1	13.8	15.8	2.9	18.7	24.0	10.0	10.8	4.3	8.7	6.1	4.0
August	1.9	13.7	15.6	3.5	19.0	24.8	9.7	10.4	5.2	8.8	5.5	4.0
September	2.0	13.9	15.9	4.4	20.3	23.2	9.5	10.2	7.0	9.3	6.0	4.1
October	2.2	11.2	13.4	4.2	17.6	30.1	7.8	8.9	6.4	8.2	6.6	3.3
November	2.6	11.5	14.1	2.6	16.6	30.3	7.9	9.2	4.0	7.7	7.6	3.4
December	3.2	13.4	16.6	4.6	21.1	33.5	8.9	10.3	6.9	9.3	9.3	3.9
<b>2003</b>												
January	3.0	13.2	16.2	4.2	20.4	31.1	8.9	10.3	6.6	9.3	8.9	3.9
February	3.9	14.3	18.3	3.7	21.9	39.4	9.6	11.4	6.0	9.9	11.6	4.2

## UNEMPLOYED PERSONS—Northern Territory and Australian Capital Territory: **Original**

Month	NUMBER OF UNEMPLOYED PERSONS.....					UNEMPLOYMENT RATE.....					UNEMPLOYMENT TO POPULATION RATIO	
	Aged 15-19 looking for f/t work	Aged 20 and over looking for f/t work	Total looking for f/t work	Looking for p/t work	Total	Aged 15-19 looking for f/t work	Aged 20 and over looking for f/t work	Total looking for f/t work	Looking for p/t work	Total	Aged 15-19 looking for f/t work	Aged 20 and over looking for f/t work
	'000	'000	'000	'000	'000	%	%	%	%	%	%	%
<b>NORTHERN TERRITORY</b>												
<b>2001</b>												
December	1.0	4.1	5.0	3.1	8.2	25.8	5.5	6.5	10.7	7.6	6.6	3.2
<b>2002</b>												
January	1.4	4.8	6.2	3.7	9.9	34.4	6.5	8.0	13.6	9.4	9.6	3.8
February	* 0.8	3.8	4.6	2.3	6.9	* 28.3	5.3	6.2	7.9	6.7	* 5.6	3.0
March	1.1	4.1	5.2	1.8	7.0	32.0	5.6	6.7	6.2	6.6	7.4	3.2
April	* 0.6	4.8	5.5	1.1	6.6	* 18.6	6.5	7.0	3.9	6.2	* 4.2	3.8
May	* 0.6	2.9	3.5	1.2	4.7	* 24.4	3.8	4.5	4.1	4.4	* 4.3	2.2
June	* 0.9	3.1	4.0	* 0.9	4.8	* 29.3	4.1	5.0	* 3.2	4.6	* 5.9	2.4
July	* 0.4	2.4	2.8	1.3	4.1	* 12.6	3.1	3.5	5.3	3.9	* 2.6	1.9
August	* 0.9	2.4	3.4	1.3	4.7	* 27.5	3.3	4.4	4.8	4.5	* 6.4	1.9
September	* 0.6	2.3	2.9	1.3	4.2	* 26.1	3.0	3.7	4.8	4.0	* 4.2	1.8
October	* 0.9	3.5	4.4	1.4	5.8	* 36.4	4.5	5.5	5.8	5.6	* 6.5	2.7
November	* 0.8	1.9	2.7	1.4	4.1	* 29.1	2.4	3.3	5.4	3.8	* 5.6	1.5
December	1.2	3.2	4.4	2.0	6.4	30.3	4.3	5.5	7.8	6.1	7.9	2.5
<b>2003</b>												
January	* 0.5	4.4	4.8	2.3	7.1	* 16.9	5.8	6.2	9.7	7.0	* 3.3	3.4
February	* 0.5	4.4	4.8	1.8	6.7	* 15.6	5.9	6.3	6.8	6.4	* 3.1	3.4
<b>AUSTRALIAN CAPITAL TERRITORY</b>												
<b>2001</b>												
December	* 1.0	4.2	5.2	2.0	7.2	* 22.0	3.3	3.9	4.2	4.0	* 4.3	1.9
<b>2002</b>												
January	1.6	5.2	6.7	2.0	8.7	29.2	4.1	5.2	4.8	5.1	6.6	2.3
February	1.2	4.3	5.5	3.4	8.9	25.2	3.4	4.2	7.5	5.1	5.0	1.9
March	* 0.8	4.0	4.9	3.2	8.1	* 21.8	3.2	3.8	6.9	4.6	* 3.5	1.8
April	* 0.3	4.3	4.6	3.3	7.9	* 8.9	3.4	3.5	7.1	4.5	* 1.3	1.9
May	* 0.3	5.6	5.8	2.9	8.8	* 7.6	4.3	4.4	6.4	4.9	* 1.1	2.5
June	* 0.7	4.3	5.0	3.2	8.2	* 18.2	3.4	3.9	6.3	4.6	* 2.9	1.9
July	* 0.4	3.7	4.1	1.6	5.7	* 11.0	2.8	3.1	3.5	3.2	* 1.8	1.6
August	* 0.7	5.6	6.3	2.1	8.4	* 23.5	4.3	4.7	4.4	4.6	* 3.1	2.5
September	* 0.7	4.3	5.0	2.4	7.4	* 20.8	3.2	3.6	5.3	4.0	* 3.0	1.9
October	* 0.5	4.9	5.5	1.7	7.2	* 15.1	3.7	4.0	3.9	4.0	* 2.3	2.2
November	* 0.5	4.4	4.9	2.0	6.9	* 16.1	3.3	3.5	4.7	3.8	* 2.0	2.0
December	* 0.4	3.1	3.5	1.8	5.3	* 11.7	2.3	2.5	3.9	2.9	* 1.9	1.4
<b>2003</b>												
January	1.3	5.1	6.4	2.4	8.8	28.5	3.9	4.7	5.7	4.9	5.6	2.3
February	1.1	5.0	6.1	3.5	9.5	22.1	3.8	4.4	7.9	5.3	4.8	2.2



## LABOUR FORCE STATUS (AGED 15 AND OVER)—New South Wales(a)

SEASONALLY ADJUSTED.....

TREND.....

Month	SEASONALLY ADJUSTED.....					TREND.....					Civilian population aged 15 and over '000
	Employed full time '000	Total employed '000	Total unemployed '000	Unemp- loyment rate %	Partic- ipation rate %	Employed full time '000	Total employed '000	Total unemployed '000	Unemp- loyment rate %	Partic- ipation rate %	
<b>MALES</b>											
<b>2001</b>											
December	1 492.5	1 723.4	104.6	5.7	70.8	1 490.2	1 723.5	115.0	6.3	71.3	2 580.3
<b>2002</b>											
January	1 495.6	1 723.9	114.4	6.2	71.2	1 492.7	1 725.7	115.4	6.3	71.3	2 582.7
February	1 500.4	1 732.8	117.6	6.4	71.6	1 494.2	1 728.2	116.5	6.3	71.4	2 585.0
March	1 490.9	1 730.3	119.6	6.5	71.5	1 494.7	1 730.9	117.8	6.4	71.4	2 587.4
April	1 488.4	1 730.9	119.6	6.5	71.4	1 494.4	1 733.2	118.8	6.4	71.5	2 590.7
May	1 504.6	1 735.6	118.8	6.4	71.5	1 493.8	1 735.4	118.5	6.4	71.5	2 593.9
June	1 486.1	1 739.9	118.2	6.4	71.5	1 493.7	1 738.0	116.3	6.3	71.4	2 597.1
July	1 493.1	1 738.2	114.2	6.2	71.2	1 494.5	1 740.6	112.9	6.1	71.3	2 600.0
August	1 497.8	1 747.2	106.1	5.7	71.2	1 495.9	1 743.1	109.8	5.9	71.2	2 602.9
September	1 501.3	1 740.4	110.3	6.0	71.0	1 497.9	1 746.0	107.8	5.8	71.1	2 605.7
October	1 497.4	1 754.3	101.0	5.4	71.1	1 500.5	1 749.6	107.1	5.8	71.2	2 608.1
November	1 502.7	1 754.6	107.1	5.8	71.3	1 503.9	1 753.9	107.7	5.8	71.3	2 610.5
December	1 505.6	1 748.3	111.8	6.0	71.2	1 507.3	1 758.8	108.8	5.8	71.5	2 612.9
<b>2003</b>											
January	1 512.7	1 769.2	111.9	6.0	71.9	1 510.6	1 763.8	110.0	5.9	71.6	2 615.5
February	1 517.3	1 774.6	110.7	5.9	72.0	1 513.6	1 768.2	111.3	5.9	71.8	2 618.1
<b>FEMALES</b>											
<b>2001</b>											
December	761.6	1 338.3	89.4	6.3	53.8	770.7	1 349.9	89.4	6.2	54.3	2 651.9
<b>2002</b>											
January	785.2	1 374.4	98.6	6.7	55.5	772.1	1 354.0	86.4	6.0	54.3	2 654.0
February	778.2	1 363.9	75.6	5.3	54.2	772.4	1 356.1	83.4	5.8	54.2	2 656.1
March	779.0	1 354.2	77.4	5.4	53.9	771.8	1 356.2	81.3	5.7	54.1	2 658.2
April	751.9	1 344.9	78.7	5.5	53.5	771.2	1 355.2	80.6	5.6	54.0	2 661.1
May	776.6	1 349.7	80.0	5.6	53.7	770.9	1 353.9	81.0	5.6	53.9	2 663.9
June	768.0	1 355.9	85.6	5.9	54.1	771.3	1 353.3	82.2	5.7	53.8	2 666.8
July	769.5	1 361.1	91.8	6.3	54.4	772.5	1 354.1	83.5	5.8	53.9	2 669.6
August	791.4	1 362.5	75.7	5.3	53.8	773.7	1 356.9	84.4	5.9	53.9	2 672.5
September	775.8	1 355.9	86.2	6.0	53.9	774.7	1 361.8	84.7	5.9	54.1	2 675.4
October	755.8	1 351.1	82.2	5.7	53.5	776.1	1 369.0	85.2	5.9	54.3	2 677.8
November	782.6	1 386.9	91.0	6.2	55.1	778.9	1 378.3	86.1	5.9	54.6	2 680.2
December	786.7	1 388.1	84.5	5.7	54.9	783.0	1 388.6	87.3	5.9	55.0	2 682.6
<b>2003</b>											
January	785.0	1 410.8	89.6	6.0	55.9	787.7	1 398.2	88.3	5.9	55.4	2 685.4
February	801.6	1 404.5	89.2	6.0	55.6	791.7	1 406.7	89.8	6.0	55.7	2 688.1
<b>PERSONS</b>											
<b>2001</b>											
December	2 254.2	3 061.7	194.0	6.0	62.2	2 260.9	3 073.4	204.3	6.2	62.7	5 232.2
<b>2002</b>											
January	2 280.8	3 098.3	213.1	6.4	63.2	2 264.8	3 079.8	201.8	6.1	62.7	5 236.7
February	2 278.6	3 096.8	193.2	5.9	62.8	2 266.6	3 084.3	199.9	6.1	62.7	5 241.1
March	2 269.8	3 084.5	197.0	6.0	62.6	2 266.6	3 087.1	199.1	6.1	62.6	5 245.6
April	2 240.2	3 075.8	198.3	6.1	62.3	2 265.7	3 088.5	199.4	6.1	62.6	5 251.7
May	2 281.2	3 085.3	198.8	6.1	62.5	2 264.7	3 089.3	199.6	6.1	62.6	5 257.8
June	2 254.1	3 095.8	203.8	6.2	62.7	2 265.0	3 091.2	198.5	6.0	62.5	5 263.9
July	2 262.6	3 099.3	206.0	6.2	62.7	2 267.0	3 094.6	196.5	6.0	62.5	5 269.6
August	2 289.2	3 109.7	181.8	5.5	62.4	2 269.6	3 100.0	194.2	5.9	62.4	5 275.4
September	2 277.1	3 096.3	196.5	6.0	62.3	2 272.6	3 107.9	192.5	5.8	62.5	5 281.1
October	2 253.1	3 105.3	183.2	5.6	62.2	2 276.6	3 118.6	192.3	5.8	62.6	5 285.9
November	2 285.3	3 141.5	198.1	5.9	63.1	2 282.8	3 132.2	193.8	5.8	62.9	5 290.7
December	2 292.3	3 136.4	196.3	5.9	62.9	2 290.4	3 147.4	196.0	5.9	63.1	5 295.6
<b>2003</b>											
January	2 297.7	3 180.0	201.5	6.0	63.8	2 298.3	3 162.0	198.3	5.9	63.4	5 300.8
February	2 318.9	3 179.1	199.9	5.9	63.7	2 305.3	3 174.8	201.1	6.0	63.6	5 306.1

(a) Revised due to annual seasonal reanalysis.

## LABOUR FORCE STATUS (AGED 15 AND OVER)—Victoria(a)

SEASONALLY ADJUSTED.....

TREND.....

Month	SEASONALLY ADJUSTED.....					TREND.....					Civilian population aged 15 and over '000
	Employed full time '000	Total employed '000	Total unemployed '000	Unemp- loyment rate %	Partic- ipation rate %	Employed full time '000	Total employed '000	Total unemployed '000	Unemp- loyment rate %	Partic- ipation rate %	
<b>MALES</b>											
<b>2001</b>											
December	1 129.8	1 308.6	87.7	6.3	72.9	1 125.8	1 308.0	91.3	6.5	73.0	1 916.2
<b>2002</b>											
January	1 131.2	1 315.2	94.3	6.7	73.5	1 127.3	1 309.7	89.6	6.4	72.9	1 918.6
February	1 119.3	1 304.2	89.1	6.4	72.5	1 128.3	1 311.4	87.7	6.3	72.8	1 921.1
March	1 131.0	1 315.6	83.3	6.0	72.7	1 128.8	1 312.9	85.8	6.1	72.7	1 923.5
April	1 126.6	1 311.4	82.6	5.9	72.4	1 129.1	1 314.4	84.4	6.0	72.6	1 926.3
May	1 132.6	1 317.5	83.2	5.9	72.6	1 128.5	1 315.0	83.5	6.0	72.5	1 929.1
June	1 129.4	1 318.0	86.6	6.2	72.7	1 126.6	1 314.1	83.0	5.9	72.3	1 931.9
July	1 122.5	1 310.5	78.8	5.7	71.8	1 123.2	1 312.1	83.1	6.0	72.1	1 934.5
August	1 120.7	1 313.7	86.0	6.1	72.3	1 119.6	1 310.5	83.4	6.0	72.0	1 937.0
September	1 120.4	1 310.7	82.4	5.9	71.8	1 117.6	1 310.3	83.4	6.0	71.8	1 939.6
October	1 103.2	1 295.7	85.4	6.2	71.1	1 118.2	1 312.0	83.1	6.0	71.8	1 942.6
November	1 120.0	1 315.0	80.5	5.8	71.7	1 120.9	1 315.0	82.7	5.9	71.8	1 945.6
December	1 130.4	1 332.6	82.9	5.9	72.6	1 124.5	1 318.3	82.2	5.9	71.9	1 948.7
<b>2003</b>											
January	1 135.9	1 324.8	82.6	5.9	72.1	1 128.2	1 321.1	81.6	5.8	71.9	1 951.6
February	1 128.4	1 315.1	79.3	5.7	71.3	1 131.4	1 322.9	80.7	5.8	71.9	1 954.5
<b>FEMALES</b>											
<b>2001</b>											
December	556.3	1 013.5	73.1	6.7	54.7	560.3	1 022.2	70.2	6.4	55.0	1 987.4
<b>2002</b>											
January	559.0	1 031.1	70.4	6.4	55.4	558.2	1 025.4	69.3	6.3	55.0	1 989.4
February	552.0	1 027.3	67.5	6.2	55.0	556.2	1 028.4	67.4	6.2	55.0	1 991.5
March	557.8	1 032.5	63.3	5.8	55.0	555.4	1 030.8	65.2	5.9	55.0	1 993.5
April	560.1	1 034.1	60.8	5.6	54.8	556.0	1 032.7	63.4	5.8	54.9	1 996.1
May	555.8	1 039.6	60.8	5.5	55.1	558.2	1 034.8	62.4	5.7	54.9	1 998.7
June	558.8	1 028.7	70.1	6.4	54.9	561.6	1 037.6	62.0	5.6	54.9	2 001.3
July	559.0	1 036.2	54.8	5.0	54.4	566.2	1 041.3	62.0	5.6	55.1	2 003.9
August	580.2	1 056.4	64.8	5.8	55.9	571.5	1 046.5	62.2	5.6	55.3	2 006.6
September	579.7	1 052.4	62.1	5.6	55.5	576.6	1 053.4	62.3	5.6	55.5	2 009.3
October	577.8	1 059.9	60.2	5.4	55.7	580.9	1 061.8	61.9	5.5	55.8	2 012.0
November	583.8	1 067.3	63.2	5.6	56.1	584.2	1 070.9	61.2	5.4	56.2	2 014.8
December	588.9	1 075.8	62.3	5.5	56.4	586.7	1 079.9	60.2	5.3	56.5	2 017.5
<b>2003</b>											
January	587.5	1 097.9	59.6	5.1	57.3	588.9	1 088.4	59.0	5.1	56.8	2 020.2
February	590.8	1 098.9	52.5	4.6	56.9	589.8	1 095.3	57.1	5.0	57.0	2 022.9
<b>PERSONS</b>											
<b>2001</b>											
December	1 686.0	2 322.1	160.9	6.5	63.6	1 686.1	2 330.2	161.5	6.5	63.8	3 903.5
<b>2002</b>											
January	1 690.2	2 346.3	164.7	6.6	64.3	1 685.5	2 335.2	158.9	6.4	63.8	3 908.0
February	1 671.2	2 331.5	156.6	6.3	63.6	1 684.5	2 339.8	155.1	6.2	63.8	3 912.6
March	1 688.8	2 348.1	146.6	5.9	63.7	1 684.1	2 343.7	151.0	6.1	63.7	3 917.1
April	1 686.7	2 345.5	143.4	5.8	63.5	1 685.1	2 347.1	147.8	5.9	63.6	3 922.5
May	1 688.5	2 357.2	144.0	5.8	63.7	1 686.7	2 349.8	145.9	5.8	63.5	3 927.8
June	1 688.2	2 346.7	156.6	6.3	63.6	1 688.2	2 351.7	145.0	5.8	63.5	3 933.2
July	1 681.5	2 346.6	133.6	5.4	63.0	1 689.4	2 353.4	145.1	5.8	63.4	3 938.4
August	1 700.9	2 370.1	150.8	6.0	63.9	1 691.1	2 357.0	145.6	5.8	63.5	3 943.6
September	1 700.0	2 363.0	144.5	5.8	63.5	1 694.1	2 363.7	145.7	5.8	63.5	3 948.8
October	1 681.0	2 355.6	145.6	5.8	63.2	1 699.1	2 373.8	145.1	5.8	63.7	3 954.6
November	1 703.9	2 382.3	143.7	5.7	63.8	1 705.1	2 385.9	144.0	5.7	63.9	3 960.4
December	1 719.4	2 408.4	145.2	5.7	64.4	1 711.2	2 398.1	142.4	5.6	64.1	3 966.2
<b>2003</b>											
January	1 723.4	2 422.7	142.2	5.5	64.6	1 717.0	2 409.4	140.6	5.5	64.2	3 971.8
February	1 719.2	2 414.0	131.8	5.2	64.0	1 721.2	2 418.2	137.8	5.4	64.3	3 977.4

(a) Revised due to annual seasonal reanalysis.

## LABOUR FORCE STATUS (AGED 15 AND OVER)—Queensland(a)

SEASONALLY ADJUSTED.....

TREND.....

Month	SEASONALLY ADJUSTED.....					TREND.....					Civilian population aged 15 and over '000
	Employed full time '000	Total employed '000	Total unemployed '000	Unemployment rate %	Participation rate %	Employed full time '000	Total employed '000	Total unemployed '000	Unemployment rate %	Participation rate %	
<b>MALES</b>											
<b>2001</b>											
December	817.9	960.2	87.5	8.4	73.5	818.1	959.1	87.0	8.3	73.4	1 424.8
<b>2002</b>											
January	818.2	958.1	88.7	8.5	73.4	820.3	962.0	86.2	8.2	73.5	1 426.8
February	824.8	968.8	84.6	8.0	73.7	822.4	965.3	84.6	8.1	73.5	1 428.8
March	824.5	969.0	82.1	7.8	73.5	824.4	968.9	82.0	7.8	73.4	1 430.8
April	825.9	971.2	78.5	7.5	73.2	826.0	972.3	78.7	7.5	73.3	1 433.3
May	828.2	974.4	75.4	7.2	73.1	827.0	975.1	75.4	7.2	73.2	1 435.8
June	826.4	979.3	72.6	6.9	73.1	827.5	977.3	72.7	6.9	73.0	1 438.3
July	826.7	980.1	68.3	6.5	72.8	827.6	978.8	70.8	6.7	72.8	1 441.1
August	831.0	980.9	70.8	6.7	72.8	827.6	980.4	69.8	6.6	72.7	1 443.9
September	826.8	980.4	69.0	6.6	72.5	828.4	982.6	69.6	6.6	72.7	1 446.7
October	829.9	981.9	70.7	6.7	72.6	830.6	985.5	69.8	6.6	72.8	1 449.2
November	832.0	990.7	69.0	6.5	73.0	834.0	988.9	69.9	6.6	72.9	1 451.7
December	829.9	991.2	71.7	6.7	73.1	838.1	992.6	69.9	6.6	73.0	1 454.2
<b>2003</b>											
January	853.0	1 002.4	69.9	6.5	73.5	842.4	995.9	69.7	6.5	73.1	1 458.2
February	848.9	996.1	67.9	6.4	72.8	846.4	998.7	69.4	6.5	73.2	1 462.3
<b>FEMALES</b>											
<b>2001</b>											
December	415.1	766.8	62.9	7.6	57.0	416.6	765.7	63.4	7.6	56.9	1 456.4
<b>2002</b>											
January	415.9	765.3	62.5	7.5	56.7	418.8	768.1	62.8	7.6	57.0	1 458.7
February	422.7	771.1	64.5	7.7	57.2	420.6	769.6	62.7	7.5	57.0	1 460.9
March	426.8	780.0	61.7	7.3	57.5	422.0	769.9	63.1	7.6	56.9	1 463.2
April	420.4	761.6	62.7	7.6	56.2	422.3	769.2	64.1	7.7	56.8	1 466.1
May	423.0	770.3	64.1	7.7	56.8	421.9	768.9	65.4	7.8	56.8	1 469.0
June	419.7	770.8	69.0	8.2	57.0	421.5	769.8	66.4	7.9	56.8	1 472.0
July	418.9	761.3	68.2	8.2	56.2	421.3	772.3	66.9	8.0	56.9	1 475.1
August	422.5	781.5	66.9	7.9	57.4	421.8	775.9	66.7	7.9	57.0	1 478.2
September	425.0	785.4	65.3	7.7	57.4	423.3	780.8	65.8	7.8	57.2	1 481.3
October	426.6	788.5	64.2	7.5	57.4	425.2	786.2	64.6	7.6	57.3	1 484.3
November	423.8	786.2	63.3	7.5	57.1	427.3	791.6	63.8	7.5	57.5	1 487.3
December	425.3	791.1	62.8	7.4	57.3	429.3	797.0	63.5	7.4	57.7	1 490.3
<b>2003</b>											
January	440.5	808.1	62.4	7.2	58.2	431.2	802.4	63.4	7.3	57.9	1 494.9
February	429.6	811.6	66.1	7.5	58.5	432.6	806.4	63.6	7.3	58.1	1 499.4
<b>PERSONS</b>											
<b>2001</b>											
December	1 233.0	1 727.0	150.5	8.0	65.2	1 234.7	1 724.8	150.4	8.0	65.1	2 881.2
<b>2002</b>											
January	1 234.1	1 723.4	151.2	8.1	65.0	1 239.0	1 730.1	149.1	7.9	65.1	2 885.5
February	1 247.4	1 739.8	149.0	7.9	65.4	1 243.0	1 735.0	147.2	7.8	65.1	2 889.8
March	1 251.3	1 749.0	143.8	7.6	65.4	1 246.3	1 738.8	145.1	7.7	65.1	2 894.0
April	1 246.3	1 732.8	141.2	7.5	64.6	1 248.3	1 741.5	142.8	7.6	65.0	2 899.4
May	1 251.2	1 744.7	139.5	7.4	64.9	1 248.9	1 744.0	140.8	7.5	64.9	2 904.8
June	1 246.1	1 750.1	141.6	7.5	65.0	1 249.1	1 747.1	139.0	7.4	64.8	2 910.2
July	1 245.7	1 741.4	136.5	7.3	64.4	1 248.9	1 751.1	137.7	7.3	64.8	2 916.2
August	1 253.5	1 762.4	137.7	7.2	65.0	1 249.4	1 756.4	136.5	7.2	64.8	2 922.1
September	1 251.8	1 765.8	134.3	7.1	64.9	1 251.7	1 763.5	135.4	7.1	64.9	2 928.0
October	1 256.5	1 770.4	134.9	7.1	64.9	1 255.8	1 771.6	134.4	7.1	65.0	2 933.5
November	1 255.8	1 776.9	132.3	6.9	65.0	1 261.2	1 780.5	133.8	7.0	65.1	2 939.0
December	1 255.2	1 782.4	134.5	7.0	65.1	1 267.4	1 789.6	133.4	6.9	65.3	2 944.5
<b>2003</b>											
January	1 293.5	1 810.6	132.3	6.8	65.8	1 273.6	1 798.3	133.2	6.9	65.4	2 953.1
February	1 278.4	1 807.7	134.0	6.9	65.6	1 279.0	1 805.0	133.0	6.9	65.5	2 961.7

(a) Revised due to annual seasonal reanalysis.

## LABOUR FORCE STATUS (AGED 15 AND OVER)—South Australia(a)

SEASONALLY ADJUSTED.....

TREND.....

Month	SEASONALLY ADJUSTED.....					TREND.....					Civilian population aged 15 and over '000
	Employed full time '000	Total employed '000	Total unemployed '000	Unemp- loyment rate %	Partic- ipation rate %	Employed full time '000	Total employed '000	Total unemployed '000	Unemp- loyment rate %	Partic- ipation rate %	
<b>MALES</b>											
<b>2001</b>											
December	317.4	376.8	31.7	7.8	68.6	319.2	378.3	31.6	7.7	68.9	595.1
<b>2002</b>											
January	321.3	381.1	31.1	7.5	69.2	319.6	379.9	31.3	7.6	69.0	595.5
February	318.0	380.9	32.1	7.8	69.3	319.9	381.2	31.0	7.5	69.2	595.9
March	320.8	383.2	29.6	7.2	69.2	320.4	382.0	30.8	7.5	69.2	596.2
April	322.0	382.8	30.4	7.3	69.3	321.0	382.2	30.6	7.4	69.2	596.6
May	322.5	382.8	29.7	7.2	69.1	321.8	382.3	30.3	7.4	69.1	597.0
June	320.5	380.9	32.0	7.8	69.1	322.6	382.4	30.0	7.3	69.0	597.4
July	323.7	382.3	28.6	7.0	68.7	323.3	382.8	29.3	7.1	68.9	597.9
August	325.3	380.6	29.1	7.1	68.5	324.1	383.7	28.4	6.9	68.9	598.4
September	326.7	390.1	26.9	6.5	69.6	325.3	384.9	27.4	6.7	68.8	598.9
October	324.3	385.0	26.5	6.4	68.7	327.0	386.1	26.7	6.5	68.9	599.3
November	327.3	385.7	26.6	6.5	68.7	329.1	387.1	26.5	6.4	69.0	599.8
December	332.6	388.8	24.0	5.8	68.8	331.4	387.9	26.6	6.4	69.0	600.2
<b>2003</b>											
January	335.0	389.1	28.3	6.8	69.5	333.7	388.6	26.9	6.5	69.2	600.9
February	337.4	388.5	29.0	7.0	69.4	335.8	389.0	27.4	6.6	69.3	601.6
<b>FEMALES</b>											
<b>2001</b>											
December	154.1	304.7	20.5	6.3	52.4	154.1	305.2	20.1	6.2	52.5	620.1
<b>2002</b>											
January	151.4	304.8	21.3	6.5	52.5	153.0	306.0	20.2	6.2	52.6	620.5
February	151.4	306.4	20.4	6.3	52.6	151.9	307.0	20.1	6.1	52.7	620.9
March	149.5	305.7	19.7	6.1	52.4	151.1	308.1	19.9	6.1	52.8	621.3
April	151.3	311.1	19.0	5.8	53.1	150.6	309.1	19.6	6.0	52.9	621.7
May	152.7	311.4	19.1	5.8	53.1	150.5	309.7	19.5	5.9	52.9	622.1
June	150.1	312.6	19.6	5.9	53.4	150.7	309.9	19.6	5.9	52.9	622.5
July	150.0	306.0	19.7	6.1	52.3	150.8	309.6	19.9	6.0	52.9	623.0
August	151.1	308.7	20.1	6.1	52.7	151.1	309.2	20.1	6.1	52.8	623.5
September	152.0	309.6	20.9	6.3	53.0	152.1	309.4	20.0	6.1	52.8	624.0
October	154.6	311.1	20.0	6.0	53.0	153.9	310.4	19.6	5.9	52.9	624.4
November	154.1	311.1	19.0	5.7	52.8	156.3	312.2	19.1	5.8	53.0	624.8
December	157.8	311.9	17.9	5.4	52.8	159.0	314.3	18.6	5.6	53.2	625.2
<b>2003</b>											
January	163.0	318.7	17.6	5.2	53.7	161.7	316.4	18.1	5.4	53.5	625.8
February	167.3	320.1	18.3	5.4	54.0	164.1	318.1	17.8	5.3	53.6	626.3
<b>PERSONS</b>											
<b>2001</b>											
December	471.5	681.5	52.2	7.1	60.4	473.3	683.6	51.8	7.0	60.5	1 215.2
<b>2002</b>											
January	472.7	685.8	52.3	7.1	60.7	472.6	685.9	51.5	7.0	60.6	1 216.0
February	469.4	687.3	52.5	7.1	60.8	471.9	688.2	51.1	6.9	60.8	1 216.7
March	470.2	689.0	49.3	6.7	60.6	471.5	690.1	50.6	6.8	60.8	1 217.5
April	473.4	693.9	49.4	6.6	61.0	471.6	691.3	50.2	6.8	60.9	1 218.3
May	475.2	694.2	48.9	6.6	61.0	472.3	692.0	49.8	6.7	60.8	1 219.1
June	470.6	693.4	51.6	6.9	61.1	473.2	692.3	49.6	6.7	60.8	1 219.9
July	473.6	688.3	48.3	6.6	60.3	474.1	692.4	49.2	6.6	60.7	1 220.9
August	476.4	689.3	49.1	6.7	60.4	475.2	692.9	48.5	6.5	60.7	1 221.9
September	478.7	699.7	47.8	6.4	61.1	477.4	694.3	47.4	6.4	60.7	1 222.9
October	478.9	696.1	46.5	6.3	60.7	480.9	696.6	46.4	6.2	60.7	1 223.7
November	481.3	696.8	45.6	6.1	60.6	485.4	699.4	45.6	6.1	60.8	1 224.6
December	490.4	700.7	41.9	5.6	60.6	490.4	702.2	45.2	6.0	61.0	1 225.4
<b>2003</b>											
January	498.0	707.8	45.9	6.1	61.4	495.4	704.9	45.1	6.0	61.1	1 226.7
February	504.7	708.6	47.4	6.3	61.6	499.9	707.1	45.1	6.0	61.3	1 227.9

(a) Revised due to annual seasonal reanalysis.

## LABOUR FORCE STATUS (AGED 15 AND OVER)—Western Australia(a)

SEASONALLY ADJUSTED.....

TREND.....

Month	SEASONALLY ADJUSTED.....					TREND.....					Civilian population aged 15 and over '000
	Employed full time '000	Total employed '000	Total unemployed '000	Unemp- loyment rate %	Partic- ipation rate %	Employed full time '000	Total employed '000	Total unemployed '000	Unemp- loyment rate %	Partic- ipation rate %	
<b>MALES</b>											
<b>2001</b>											
December	456.2	533.9	39.1	6.8	75.3	458.8	533.6	39.0	6.8	75.2	761.1
<b>2002</b>											
January	459.4	532.5	40.2	7.0	75.2	459.3	534.5	38.7	6.8	75.2	761.9
February	459.4	535.6	38.7	6.7	75.3	459.5	535.4	38.7	6.7	75.3	762.8
March	457.1	535.7	34.9	6.1	74.7	459.3	536.5	38.7	6.7	75.3	763.7
April	457.9	536.8	41.0	7.1	75.5	458.5	537.6	38.9	6.7	75.4	764.9
May	462.6	538.2	42.8	7.4	75.8	457.3	538.8	39.1	6.8	75.4	766.1
June	458.5	546.5	35.1	6.0	75.8	456.0	539.7	39.3	6.8	75.5	767.3
July	449.0	535.8	39.7	6.9	74.9	454.6	540.3	39.4	6.8	75.4	768.5
August	451.4	540.2	40.1	6.9	75.4	453.8	540.8	39.3	6.8	75.4	769.6
September	456.1	541.1	40.8	7.0	75.5	454.1	541.4	39.1	6.7	75.3	770.8
October	458.1	543.4	36.7	6.3	75.2	455.8	542.3	38.8	6.7	75.3	771.8
November	454.9	543.6	39.2	6.7	75.4	458.5	543.7	38.5	6.6	75.3	772.7
December	460.8	543.9	37.7	6.5	75.2	461.5	545.2	37.9	6.5	75.4	773.6
<b>2003</b>											
January	464.6	546.9	38.3	6.5	75.5	464.5	546.8	37.3	6.4	75.4	774.9
February	471.3	549.7	35.5	6.1	75.4	467.0	547.9	36.8	6.3	75.4	776.1
<b>FEMALES</b>											
<b>2001</b>											
December	203.6	408.8	25.6	5.9	57.0	205.4	411.6	27.0	6.2	57.6	761.6
<b>2002</b>											
January	204.0	405.7	31.2	7.1	57.3	205.5	412.3	26.6	6.1	57.6	762.5
February	206.6	416.4	25.6	5.8	57.9	206.4	413.4	25.6	5.8	57.5	763.4
March	206.5	418.7	22.4	5.1	57.7	207.9	414.7	24.4	5.6	57.4	764.2
April	212.0	415.8	22.6	5.2	57.3	209.5	416.0	23.3	5.3	57.4	765.5
May	212.6	414.5	23.0	5.3	57.0	210.8	417.2	22.7	5.2	57.4	766.9
June	211.3	418.2	23.0	5.2	57.4	211.5	418.0	22.5	5.1	57.3	768.2
July	208.5	420.1	21.4	4.9	57.4	211.4	418.5	22.7	5.1	57.4	769.3
August	213.4	417.9	24.7	5.6	57.4	211.1	419.4	23.3	5.3	57.5	770.5
September	212.4	423.6	23.1	5.2	57.9	211.1	421.0	23.9	5.4	57.7	771.7
October	209.2	420.6	25.5	5.7	57.7	211.7	422.9	24.4	5.4	57.9	772.7
November	209.9	422.5	21.3	4.8	57.4	212.8	424.9	24.7	5.5	58.1	773.6
December	215.1	427.4	29.3	6.4	59.0	214.0	426.9	24.9	5.5	58.3	774.6
<b>2003</b>											
January	219.2	434.7	24.9	5.4	59.2	215.1	428.7	24.9	5.5	58.5	775.9
February	214.7	427.1	22.6	5.0	57.9	216.0	430.3	24.7	5.4	58.6	777.2
<b>PERSONS</b>											
<b>2001</b>											
December	659.7	942.7	64.7	6.4	66.2	664.2	945.2	66.0	6.5	66.4	1 522.7
<b>2002</b>											
January	663.4	938.3	71.4	7.1	66.2	664.8	946.7	65.3	6.5	66.4	1 524.4
February	666.0	952.0	64.3	6.3	66.6	666.0	948.8	64.2	6.3	66.4	1 526.2
March	663.6	954.4	57.3	5.7	66.2	667.2	951.1	63.1	6.2	66.4	1 527.9
April	669.9	952.6	63.6	6.3	66.4	668.0	953.6	62.2	6.1	66.4	1 530.4
May	675.1	952.7	65.7	6.5	66.4	668.2	955.9	61.8	6.1	66.4	1 532.9
June	669.8	964.6	58.1	5.7	66.6	667.5	957.8	61.8	6.1	66.4	1 535.4
July	657.5	955.9	61.2	6.0	66.1	666.0	958.9	62.1	6.1	66.4	1 537.8
August	664.7	958.0	64.8	6.3	66.4	664.9	960.2	62.6	6.1	66.4	1 540.1
September	668.5	964.7	64.0	6.2	66.7	665.2	962.4	63.0	6.1	66.5	1 542.5
October	667.3	964.0	62.1	6.1	66.4	667.5	965.2	63.2	6.1	66.6	1 544.4
November	664.8	966.1	60.5	5.9	66.4	671.3	968.6	63.2	6.1	66.7	1 546.3
December	675.9	971.3	67.0	6.5	67.1	675.4	972.1	62.8	6.1	66.8	1 548.3
<b>2003</b>											
January	683.8	981.7	63.2	6.0	67.4	679.6	975.5	62.2	6.0	66.9	1 550.8
February	685.9	976.8	58.1	5.6	66.6	682.9	978.2	61.5	5.9	67.0	1 553.3

(a) Revised due to annual seasonal reanalysis.

## LABOUR FORCE STATUS (AGED 15 AND OVER)—Tasmania(a)

SEASONALLY ADJUSTED.....

TREND.....

Month	SEASONALLY ADJUSTED.....					TREND.....					Civilian population aged 15 and over '000
	Employed full time '000	Total employed '000	Total unemployed '000	Unemployment rate %	Participation rate %	Employed full time '000	Total employed '000	Total unemployed '000	Unemployment rate %	Participation rate %	
<b>MALES</b>											
<b>2001</b>											
December	94.0	109.4	11.6	9.5	66.8	93.7	110.0	11.8	9.7	67.2	181.2
<b>2002</b>											
January	93.3	110.3	11.3	9.3	67.1	93.6	109.9	11.5	9.5	67.0	181.2
February	93.7	110.2	10.8	8.9	66.7	93.3	109.5	11.3	9.4	66.7	181.3
March	93.5	108.8	11.8	9.7	66.5	93.0	109.0	11.3	9.4	66.4	181.3
April	92.5	108.4	11.1	9.3	65.8	92.8	108.6	11.4	9.5	66.1	181.4
May	91.9	107.5	11.8	9.9	65.8	92.7	108.3	11.4	9.5	66.0	181.5
June	93.4	109.2	11.5	9.5	66.4	92.8	108.3	11.4	9.5	65.9	181.6
July	92.1	107.6	11.5	9.7	65.6	93.0	108.6	11.2	9.3	65.9	181.7
August	93.9	109.4	10.5	8.7	66.0	93.4	109.2	10.9	9.1	66.1	181.8
September	94.4	110.2	11.1	9.2	66.7	93.9	109.7	10.8	9.0	66.3	181.8
October	93.3	109.3	10.5	8.8	65.9	94.3	110.1	10.9	9.0	66.5	181.9
November	95.1	111.6	10.0	8.3	66.9	94.6	110.3	11.2	9.2	66.7	182.0
December	94.8	110.2	12.7	10.3	67.5	94.9	110.4	11.6	9.5	67.0	182.1
<b>2003</b>											
January	96.1	110.5	11.7	9.6	67.1	95.0	110.3	12.1	9.8	67.1	182.3
February	94.0	109.1	13.2	10.8	67.0	95.0	110.1	12.5	10.2	67.2	182.5
<b>FEMALES</b>											
<b>2001</b>											
December	44.3	88.3	6.9	7.3	49.6	44.6	88.9	7.2	7.5	50.1	191.8
<b>2002</b>											
January	44.3	87.3	8.1	8.5	49.7	44.2	88.6	7.2	7.5	49.9	191.9
February	43.1	88.6	8.4	8.6	50.5	43.6	88.5	7.1	7.4	49.8	192.0
March	44.2	89.0	5.9	6.3	49.4	43.0	88.8	7.0	7.3	49.8	192.1
April	41.9	89.0	6.2	6.5	49.5	42.6	89.2	6.9	7.2	50.0	192.2
May	42.3	90.0	6.8	7.0	50.3	42.3	89.7	7.0	7.2	50.2	192.3
June	41.7	90.3	7.4	7.6	50.8	42.2	89.9	7.1	7.4	50.4	192.4
July	42.0	89.6	8.1	8.3	50.7	42.5	89.8	7.4	7.6	50.5	192.5
August	43.0	90.1	7.3	7.5	50.5	43.0	89.5	7.6	7.8	50.4	192.6
September	44.4	88.8	7.8	8.1	50.1	43.5	89.3	7.6	7.9	50.3	192.7
October	44.3	89.3	7.5	7.8	50.2	44.0	89.3	7.6	7.9	50.2	192.8
November	43.2	88.0	7.2	7.5	49.3	44.4	89.4	7.6	7.8	50.3	193.0
December	46.2	90.5	8.3	8.4	51.1	44.8	89.7	7.6	7.8	50.4	193.1
<b>2003</b>											
January	44.0	90.8	7.1	7.3	50.7	45.0	90.1	7.7	7.9	50.6	193.3
February	45.6	90.6	8.1	8.3	51.0	45.2	90.4	7.8	7.9	50.8	193.5
<b>PERSONS</b>											
<b>2001</b>											
December	138.3	197.8	18.5	8.5	58.0	138.3	198.9	19.1	8.7	58.4	373.0
<b>2002</b>											
January	137.6	197.5	19.4	9.0	58.1	137.7	198.5	18.7	8.6	58.2	373.2
February	136.8	198.7	19.2	8.8	58.4	136.9	198.0	18.5	8.5	58.0	373.3
March	137.6	197.8	17.7	8.2	57.7	136.1	197.8	18.3	8.5	57.9	373.4
April	134.5	197.4	17.2	8.0	57.4	135.4	197.8	18.3	8.5	57.8	373.6
May	134.3	197.5	18.6	8.6	57.8	135.0	198.0	18.4	8.5	57.9	373.8
June	135.2	199.5	18.9	8.7	58.4	135.0	198.2	18.5	8.5	57.9	374.0
July	134.1	197.2	19.6	9.0	57.9	135.5	198.4	18.5	8.5	58.0	374.2
August	137.0	199.5	17.7	8.2	58.0	136.3	198.7	18.5	8.5	58.0	374.4
September	138.8	199.0	18.9	8.7	58.2	137.4	199.0	18.4	8.5	58.1	374.6
October	137.6	198.6	18.0	8.3	57.8	138.3	199.4	18.5	8.5	58.1	374.8
November	138.3	199.6	17.2	7.9	57.8	139.1	199.7	18.8	8.6	58.3	374.9
December	141.0	200.7	20.9	9.4	59.1	139.6	200.1	19.2	8.8	58.4	375.1
<b>2003</b>											
January	140.1	201.3	18.9	8.6	58.6	140.1	200.4	19.7	9.0	58.6	375.6
February	139.6	199.6	21.4	9.7	58.8	140.2	200.5	20.3	9.2	58.8	376.0

(a) Revised due to annual seasonal reanalysis.

## LABOUR FORCE STATUS (AGED 15 AND OVER)—Northern Territory(a)(b)

TREND.....

Month	Employed full time '000	Total employed '000	Total unemployed '000	Unemp- loyment rate %	Partic- ipation rate %	Civilian population aged 15 and over '000
MALES						
<b>2001</b>						
December	43.9	54.4	4.5	7.7	79.5	74.2
<b>2002</b>						
January	43.9	54.7	4.5	7.6	79.9	74.1
February	44.0	55.1	4.4	7.4	80.2	74.1
March	44.4	55.5	4.2	7.0	80.5	74.1
April	44.8	55.9	3.8	6.4	80.6	74.1
May	45.1	56.0	3.4	5.8	80.4	74.0
June	45.2	55.9	3.1	5.3	79.8	74.0
July	45.2	55.6	3.0	5.1	79.2	74.0
August	45.0	55.2	2.9	5.1	78.6	73.9
September	44.9	54.7	3.0	5.2	78.1	73.9
October	44.9	54.5	3.2	5.5	78.0	73.9
November	45.0	54.4	3.3	5.7	78.1	73.8
December	45.2	54.5	3.3	5.7	78.4	73.8
<b>2003</b>						
January	45.3	54.7	3.3	5.7	78.7	73.7
February	45.4	54.9	3.4	5.8	79.0	73.7
FEMALES						
<b>2001</b>						
December	28.2	43.4	3.4	7.3	68.2	68.6
<b>2002</b>						
January	28.3	43.9	3.1	6.6	68.5	68.6
February	28.4	44.4	2.7	5.8	68.6	68.7
March	28.5	44.7	2.4	5.0	68.5	68.7
April	28.7	44.8	2.1	4.5	68.2	68.7
May	29.0	44.6	2.0	4.2	67.8	68.7
June	29.3	44.4	1.9	4.1	67.4	68.7
July	29.5	44.2	1.9	4.1	67.1	68.6
August	29.8	44.0	1.9	4.2	67.0	68.5
September	30.0	44.0	2.0	4.3	67.1	68.5
October	30.1	44.1	2.0	4.4	67.4	68.4
November	30.1	44.2	2.1	4.5	67.8	68.4
December	30.0	44.4	2.2	4.8	68.2	68.4
<b>2003</b>						
January	29.8	44.5	2.4	5.0	68.6	68.3
February	29.6	44.7	2.5	5.2	69.0	68.3
PERSONS						
<b>2001</b>						
December	72.1	97.8	8.0	7.5	74.1	142.7
<b>2002</b>						
January	72.1	98.6	7.6	7.2	74.4	142.8
February	72.4	99.5	7.1	6.7	74.6	142.8
March	72.9	100.2	6.5	6.1	74.7	142.8
April	73.6	100.7	5.9	5.5	74.7	142.8
May	74.1	100.7	5.4	5.1	74.3	142.7
June	74.5	100.3	5.1	4.8	73.9	142.6
July	74.7	99.8	4.9	4.7	73.4	142.6
August	74.9	99.2	4.9	4.7	73.0	142.5
September	74.9	98.7	5.0	4.8	72.8	142.4
October	75.0	98.6	5.2	5.0	72.9	142.3
November	75.1	98.7	5.4	5.2	73.1	142.2
December	75.2	98.9	5.5	5.3	73.5	142.1
<b>2003</b>						
January	75.2	99.2	5.7	5.4	73.9	142.0
February	75.1	99.6	5.8	5.5	74.2	142.0

(a) Trend estimates for the most recent three months may be subject to significant revisions as data for later months become available. (b) Revised due to annual seasonal reanalysis.

## LABOUR FORCE STATUS (AGED 15 AND OVER)—Australian Capital Territory(a)(b)

TREND.....

Month	Employed full time '000	Total employed '000	Total unemployed '000	Unemp- loyment rate %	Partic- ipation rate %	Civilian population aged 15 and over '000
<b>MALES</b>						
<b>2001</b>						
December	73.2	88.0	4.7	5.1	77.1	120.2
<b>2002</b>						
January	73.5	87.8	4.8	5.1	76.9	120.4
February	73.8	87.7	4.8	5.2	76.8	120.5
March	74.3	87.8	4.7	5.1	76.7	120.6
April	74.8	88.0	4.6	5.0	76.7	120.8
May	75.3	88.5	4.5	4.8	77.0	120.9
June	75.9	89.1	4.4	4.7	77.3	121.0
July	76.5	89.8	4.4	4.7	77.8	121.1
August	77.1	90.3	4.4	4.7	78.2	121.1
September	77.7	90.7	4.5	4.7	78.5	121.2
October	78.0	91.0	4.5	4.7	78.6	121.5
November	78.2	91.1	4.6	4.8	78.6	121.7
December	78.2	91.1	4.7	4.9	78.6	121.9
<b>2003</b>						
January	78.2	91.0	4.8	5.0	78.5	122.0
February	78.0	90.8	4.8	5.0	78.4	122.0
<b>FEMALES</b>						
<b>2001</b>						
December	50.8	79.8	2.8	3.4	65.8	125.6
<b>2002</b>						
January	50.6	80.1	2.9	3.4	66.0	125.7
February	50.5	80.4	2.9	3.5	66.2	125.9
March	50.5	80.9	3.0	3.6	66.6	126.0
April	50.7	81.3	3.1	3.7	67.0	126.1
May	51.1	81.8	3.3	3.9	67.4	126.2
June	51.6	82.3	3.4	4.0	67.8	126.4
July	52.2	82.6	3.5	4.0	68.1	126.5
August	52.8	83.0	3.4	3.9	68.2	126.7
September	53.3	83.2	3.2	3.7	68.1	126.8
October	53.7	83.4	3.0	3.5	68.0	127.0
November	54.0	83.4	2.8	3.3	67.9	127.1
December	53.9	83.4	2.7	3.2	67.7	127.3
<b>2003</b>						
January	53.8	83.3	2.7	3.1	67.5	127.4
February	53.5	83.1	2.7	3.1	67.3	127.4
<b>PERSONS</b>						
<b>2001</b>						
December	124.1	167.7	7.6	4.3	71.3	245.9
<b>2002</b>						
January	124.1	167.9	7.6	4.3	71.3	246.1
February	124.3	168.2	7.7	4.4	71.4	246.4
March	124.7	168.6	7.7	4.4	71.5	246.6
April	125.5	169.4	7.8	4.4	71.8	246.9
May	126.5	170.4	7.8	4.4	72.1	247.1
June	127.5	171.4	7.9	4.4	72.5	247.4
July	128.7	172.4	7.9	4.4	72.8	247.6
August	129.9	173.3	7.8	4.3	73.1	247.8
September	131.0	173.9	7.7	4.2	73.2	248.1
October	131.8	174.4	7.5	4.1	73.2	248.5
November	132.2	174.5	7.5	4.1	73.1	248.8
December	132.2	174.5	7.4	4.1	73.0	249.2
<b>2003</b>						
January	131.9	174.2	7.5	4.1	72.9	249.3
February	131.5	173.9	7.5	4.1	72.7	249.4

(a) Trend estimates for the most recent three months may be subject to significant revisions as data for later months become available.

(b) Revised due to annual seasonal reanalysis.



## EXPLANATORY NOTES

### INTRODUCTION

**1** This publication contains preliminary estimates of the civilian labour force derived from the Labour Force Survey component of the monthly population survey. Estimates for the current month are preliminary and subject to revision. Revised estimates for the current month and more detailed estimates will be published in *Labour Force, Australia* (cat. no. 6203.0).

### CONCEPTS, SOURCES AND METHODS

**2** The conceptual framework used in Australia's Labour Force Survey aligns closely with the standards and guidelines set out in Resolutions of the International Conference of Labour Statisticians. Descriptions of the underlying concepts and structure of Australia's labour force statistics, and the sources and methods used in compiling the estimates, are presented in *Labour Statistics: Concepts, Sources and Methods* (cat. no. 6102.0) which is also available on the ABS website <<http://www.abs.gov.au>> (About Statistics—Concepts and Classifications).

### MONTHLY POPULATION SURVEY

**3** The population survey is based on a multi-stage area sample of private dwellings (currently about 30,000 houses, flats, etc.) and a list sample of non-private dwellings (hotels, motels, etc.), and covers about 0.45% of the population of Australia. The information is obtained from the occupants of selected dwellings by specially trained interviewers. The information obtained relates to the week before the interview (i.e. the reference week).

**4** Households selected for the Labour Force Survey are interviewed each month for 8 months, with one eighth of the sample being replaced each month. The first interview is conducted face-to-face. Subsequent interviews are conducted by telephone (if acceptable to the respondent).

**5** The interviews are generally conducted during the two weeks beginning on the Monday between the 6th and 12th of each month. Each year, to deal with operational difficulties involved with collecting and processing the Labour Force Survey around the Christmas and New Year holiday period, interviews for December start four weeks after November interviews start, and January interviews start five weeks after December interviews start. As a result, January interviewing may commence as early as the 8th or as late as the 14, depending on the year. Occasionally, circumstances that present significant operational difficulties for survey collection can result in a change to the normal pattern for the start of interviewing.

**6** Estimates from the Labour Force Survey are published first in this publication 31 days after the commencement of interviews for that month, with the exception of estimates for each December which are published 38 days after the commencement of interviews.

### SCOPE OF SURVEY

**7** The Labour Force Survey includes all persons aged 15 and over except members of the permanent defence forces, certain diplomatic personnel of overseas governments customarily excluded from census and estimated population counts, overseas residents in Australia, and members of non-Australian defence forces (and their dependants) stationed in Australia.

### COVERAGE

**8** In the Labour Force Survey, coverage rules are applied which aim to ensure that each person is associated with only one dwelling, and hence has only one chance of selection. The coverage rules are necessarily a balance between theoretical and operational considerations. Nevertheless, the chance of a person being enumerated at two separate dwellings in the survey is considered to be negligible.

## EXPLANATORY NOTES

### POPULATION BENCHMARKS

**9** Labour Force Survey estimates are calculated in such a way as to add up to independent estimates of the civilian population aged 15 and over (population benchmarks). From February 1999, labour force estimates have been compiled using benchmarks based on the results of the 1996 Census of Population and Housing. Small revisions were made to many of the historical estimates from January 1995 to January 1999. The ABS expects to introduce new benchmarks, based on the 2001 Census, in February 2004.

### COMPARABILITY OF SERIES

**10** From April 1986, the definition of employed persons was changed to include persons who worked without pay between 1 and 14 hours per week in a family business or on a farm (i.e. contributing family workers). For further information, see paragraphs 36 and 37 of the Explanatory Notes to the February 1987 issue of *Labour Force, Australia* (cat. no. 6203.0).

**11** The ABS introduced telephone interviewing into the Labour Force Survey in August 1996. Implementation was phased in for each new sample group from August 1996 to February 1997. During the period of implementation, the new method produced different estimates than would have been obtained under the old methodology. The effect dissipated over the final months of implementation and was no longer discernible from February 1997. The estimates for February 1997 and onwards are directly comparable to estimates for periods prior to August 1996. For further details, see the feature article in the June 1997 issue of *Labour Force, Australia* (cat. no. 6203.0).

**12** From April 2001 the Labour Force Survey has been conducted using a redesigned questionnaire containing additional data items and some minor definitional changes. Core labour force series were revised for the period April 1986 to March 2001 to ensure continuity. For further details, see *Information Paper: Implementing the Redesigned Labour Force Survey Questionnaire* (cat. no. 6295.0) and *Information Paper: Questionnaires Used in the Labour Force Survey* (cat. no. 6232.0).

### SURVEY SAMPLE REDESIGN

**13** The Labour Force Survey sample was last reselected using information collected in the 2001 Census of Population and Housing.

**14** The bulk of the new sample is being phased in over the period November 2002 to June 2003, with one eighth of this portion of the sample being introduced every month. The remainder of the sample (about 18% of the total), which covers less settled areas of Australia and non-private dwellings was rotated in full for New South Wales, Victoria, Tasmania, Northern Territory and Australian Capital Territory in November 2002, and for Queensland, South Australia and Western Australia in December 2002. Such a pattern of implementation means that any changes to labour force estimates due to differences between the two samples, or any other influences, will be spread over the eight months.

**15** For further details, see *Information Paper: Labour Force Survey Sample Design* (cat. no. 6269.0).

## EXPLANATORY NOTES

### RELIABILITY OF ESTIMATES

**16** Two types of error are possible in an estimate based on a sample survey: sampling error and non-sampling error.

*Sampling error* occurs because a sample, rather than the entire population, is surveyed. One measure of the likely difference resulting from not including all dwellings in the survey is given by the standard error. There are about two chances in three that a sample estimate will differ by less than one standard error from the figure that would have been obtained if all dwellings had been included in the survey, and about nineteen chances in twenty that the difference will be less than two standard errors. Standard errors of estimates for the latest month and of estimates of movements since the previous month are shown on pages 31 and 32. Standard errors of other estimates and other movements may be determined by using information in the Technical Notes in *Labour Force, Australia* (cat. no. 6203.0).

*Non sampling error* arises from inaccuracies in collecting, recording and processing the data. Every effort is made to minimise reporting error by the careful design of questionnaires, intensive training and supervision of interviewers, and efficient data processing procedures.

### SEASONAL ADJUSTMENT AND TREND ESTIMATION

**17** Seasonally adjusted series are published in Tables 2, 5 and 12 to 17. Seasonal factors are reviewed annually to take account of each additional year's original data. The results of the latest review were used to compile the seasonally adjusted and trend estimates given in this publication. Accordingly, estimates for periods up to and including January 2003 have been revised. Information about the last annual review of seasonal factors will be published in a feature article in the February 2003 issue of *Labour Force, Australia* (cat. no. 6203.0).

**18** Seasonal adjustment is a means of removing the estimated effects of normal seasonal variation from the series so that the effects of other influences on the series can be more clearly recognised. Seasonal adjustment does not aim to remove the irregular or non-seasonal influences which may be present in any particular month. This means that month-to-month movements of the seasonally adjusted estimates may not be reliable indicators of trend behaviour. For example, irregular factors unrelated to the trend account for more than half the seasonally adjusted movement with the following frequency:

Employment: 6 in 10 monthly movements

Unemployment: 8 in 10 monthly movements

Unemployment rate: 7 in 10 monthly movements

Participation rate: 9 in 10 monthly movements.

**19** The smoothing of seasonally adjusted series reduces the impact of the irregular component of the seasonally adjusted series, and creates trend estimates. These trend estimates are derived by applying a 13-term Henderson-weighted moving average to all months except the last six. The last six monthly trend estimates are obtained by applying surrogates of the Henderson average to the seasonally adjusted series. Trend series are used to analyse the underlying behaviour of the series over time. These are published in tables 3, 6 and 12 to 19.

**20** While this smoothing technique enables estimates to be produced for the latest month, it does result in revisions to the most recent months as additional observations become available. Generally, subsequent revisions become smaller, and after three months have a negligible impact on the series. There will also be revisions as a result of the annual review of seasonal factors.

## EXPLANATORY NOTES

### SEASONAL ADJUSTMENT AND TREND ESTIMATION *continued*

**21** Trend estimates are published for the Northern Territory in table 18 and for the Australian Capital Territory in table 19. Unadjusted series for the two Territories have shown, historically, a high degree of variability, which can lead to considerable revisions to the seasonally adjusted estimates after each annual seasonal factor re-analysis. Seasonally adjusted estimates are not currently published for the two Territories. The most recent six months trend estimates are subject to revision. For the three most recent months, the revision may be relatively large. Inferences about trends drawn from smoothed seasonally adjusted (trend) estimates for months earlier than the latest three months are unlikely to be affected by month to month revisions. They may be affected by revision resulting from the annual re-analysis of seasonal factors.

**22** For further information, see *A Guide to Interpreting Time Series—Monitoring 'Trends': an Overview* (cat. no. 1348.0) or contact the Assistant Director, Time Series Analysis on (02) 6252 6345.

### RELATED PUBLICATIONS

**23** Users may also wish to refer to *Labour Force, Australia* (cat. no. 6203.0). This publication contains a detailed list of related publications which are available from ABS Bookshops.

**24** ABS Information about the labour market can be found on the Labour theme page on the ABS web site <<http://www.abs.gov.au>> (Themes—People, Labour).

**25** Current publications and other products released by the ABS are listed in the *Catalogue of Publications and Products* (cat. no. 1101.0). The Catalogue is available from any ABS office or the ABS web site <<http://www.abs.gov.au>> (Products and Services). The ABS also issues a daily Release Advice on the web site (Information on Releases) which details products to be released in the week ahead.

### DATA AVAILABLE ON REQUEST

**26** As well as the statistics included in this and related publications, the ABS may have other relevant data available. Inquiries should be made to Marjory Smith on 02 6252 6510 or to any ABS office.

### EFFECTS OF ROUNDING

**27** Estimates have been rounded and discrepancies may occur between sums of the component items and totals.

**28** Estimates of movement shown in this publication are obtained by taking the difference of unrounded estimates. The movement estimate is then rounded to one decimal place. Therefore where a discrepancy occurs between the reported movement and the difference of the rounded estimates, the reported movement will be more accurate.

### SYMBOLS AND OTHER USAGES

\* subject to sampling variability too high for most practical uses. See the Technical Notes in cat. no. 6203.0 for more details.

.. not applicable

r revised

pts percentage points

## G L O S S A R Y

<b>Actively looking for work</b>	Includes writing, telephoning or applying in person to an employer for work; answering an advertisement for a job; checking factory noticeboards or the touchscreens at the Centrelink offices; being registered with Centrelink as a jobseeker; checking or registering with any other employment agency; advertising or tendering for work; and contacting friends or relatives.
<b>Attending school</b>	Persons aged 15 to 19 years enrolled at secondary or high school in the reference week.
<b>Attending tertiary educational institution full time</b>	Persons aged 15 to 24 years enrolled full time at a TAFE college, university, or other educational institution in the reference week, except those persons aged 15 to 19 years who were still attending school.
<b>Civilian population aged 15 years and over</b>	All usual residents of Australia aged 15 years and over except members of the permanent defence forces, certain diplomatic personnel of overseas governments customarily excluded from census and estimated population counts, overseas residents in Australia, and members of non-Australian defence forces (and their dependants) stationed in Australia.
<b>Employed</b>	<p>All persons aged 15 years and over who, during the reference week:</p> <ul style="list-style-type: none"> <li>■ worked for one hour or more for pay, profit, commission or payment in kind in a job or business, or on a farm (comprising employees, employers and own account workers); or</li> <li>■ worked for one hour or more without pay in a family business or on a farm (i.e. contributing family workers); or</li> <li>■ were employees who had a job but were not at work and were: <ul style="list-style-type: none"> <li>■ away from work for less than four weeks up to the end of the reference week; or</li> <li>■ away from work for more than four weeks up to the end of the reference week and received pay for some or all of the four week period to the end of the reference week; or</li> <li>■ away from work as a standard work or shift arrangement; or</li> <li>■ on strike or locked out; or</li> <li>■ on workers' compensation and expected to return to their job; or</li> </ul> </li> <li>■ were employers or own account workers, who had a job, business or farm, but were not at work.</li> </ul>
<b>Full-time workers</b>	Employed persons who usually worked 35 hours or more a week (in all jobs) and those who, although usually working less than 35 hours a week, worked 35 hours or more during the reference week.
<b>Labour force</b>	For any group, persons who were employed or unemployed, as defined.
<b>Labour force status</b>	A classification of the civilian population aged 15 years and over into employed, unemployed or not in the labour force, as defined. The definitions conform closely to the international standard definitions adopted by the International Conferences of Labour Statisticians.
<b>Not in the labour force</b>	Persons who were not in the categories employed or unemployed as defined.
<b>Participation rate</b>	For any group, the labour force expressed as a percentage of the civilian population aged 15 years and over in the same group.
<b>Part-time workers</b>	Employed persons who usually worked less than 35 hours a week (in all jobs) and either did so during the reference week, or were not at work in the reference week.

## G L O S S A R Y

<b>Seasonally adjusted series</b>	A time series of estimates with the estimated effects of normal seasonal variation removed. See Explanatory Notes 17 and 18 for more detail.
<b>Trend series</b>	A smoothed seasonally adjusted series of estimates. See Explanatory Notes 19 to 21 for more detail.
<b>Unemployed</b>	Persons aged 15 years and over who were not employed during the reference week, and: <ul style="list-style-type: none"><li>■ had actively looked for full-time or part-time work at any time in the four weeks up to the end of the reference week and:<ul style="list-style-type: none"><li>■ were available for work in the reference week; or</li><li>■ were waiting to start a new job within four weeks from the end of the reference week and could have started in the reference week if the job had been available then.</li></ul></li></ul>
<b>Unemployed looking for full-time work</b>	Unemployed persons who: <ul style="list-style-type: none"><li>■ actively looked for full-time work and were available for work in the reference week; or</li><li>■ actively looked for work and were not available for work in the reference week because they were waiting to start a new full-time job.</li></ul>
<b>Unemployed looking for part-time work</b>	Unemployed persons who: <ul style="list-style-type: none"><li>■ actively looked for part-time work only and were available for work in the reference week; or</li><li>■ actively looked for work and were not available for work in the reference week because they were waiting to start a new part-time job.</li></ul>
<b>Unemployment rate</b>	For any group, the number of unemployed persons expressed as a percentage of the labour force in the same group.
<b>Unemployment to population ratio</b>	For any group, the number of unemployed persons expressed as a percentage of the civilian population in the same group.

## STANDARD ERRORS

The estimates in this publication are based on information gained from the occupants of a sample survey of dwellings. Because the entire population is not surveyed, the published estimates are subject to sampling error. The most common way of quantifying such sampling error is to calculate the standard error for the published estimate or statistic.

### LEVEL ESTIMATES

To illustrate, let us say the published level estimate for employed persons aged 15 to 19 is 700,000. The calculated standard error in this case is 9,800. The standard error is then used to interpret the level estimate of 700,000. For instance, the standard error of 9,800 indicates that:

- There are approximately two chances in three that the real value falls within the range 690,200 to 709,800 (700,000 + or - 9,800)
- There are approximately nineteen chances in twenty that the real value falls within the range 680,400 to 719,600 (700,000 + or - 19,600).

The real value in this case is the result we would obtain if we could enumerate the total population.

The following tables show the standard errors for this month's level estimates.

	EMPLOYED.....			UNEMPLOYED.....			Labour force	Not in labour force	Unemployment rate	Participation rate
	Full time	Part time	Total	Looking for f/t work	Looking for p/t work	Total				
	'000	'000	'000	'000	'000	'000				
NSW	18.7	10.7	22.7	5.5	3.8	6.0	23.7	16.7	0.2	0.4
Vic.	14.2	8.7	17.1	4.0	2.9	4.5	17.7	12.8	0.2	0.4
Qld	11.0	7.8	12.5	4.2	2.8	4.7	12.9	10.0	0.2	0.4
SA	5.1	3.6	5.8	1.8	1.2	2.1	6.0	5.0	0.3	0.5
WA	5.5	4.1	6.1	2.2	1.4	2.5	6.2	5.0	0.2	0.4
Tas.	1.8	1.3	2.1	0.9	0.5	0.9	2.2	1.9	0.4	0.6
NT	1.3	0.9	1.4	0.5	0.3	0.5	1.4	1.0	0.5	1.0
ACT	1.8	1.1	2.1	0.5	0.4	0.6	2.1	1.4	0.3	0.9
Males	21.7	10.1	23.8	7.2	4.1	7.8	25.0	15.4	0.1	0.3
Females	16.0	14.7	20.9	6.1	4.8	7.2	21.7	18.8	0.2	0.3
Persons	28.9	16.8	38.4	8.7	5.8	9.8	41.1	24.8	0.1	0.3

	NUMBER OF UNEMPLOYED PERSONS.....					UNEMPLOYMENT RATE.....				
	Aged 15-19 looking for f/t work	Aged 20 and over looking for f/t work	Total looking for f/t work	Looking for p/t work	Total	Aged 15-19 looking for f/t work	Aged 20 and over looking for f/t work	Total looking for f/t work	Looking for p/t work	Total
	'000	'000	'000	'000	'000	pts	pts	pts	pts	pts
NSW	2.7	5.3	5.5	3.8	6.0	2.6	0.2	0.2	0.4	0.2
Vic.	1.7	3.9	4.0	2.9	4.5	2.9	0.2	0.2	0.4	0.2
Qld	2.1	3.8	4.2	2.8	4.7	3.0	0.3	0.3	0.5	0.2
SA	0.9	1.7	1.8	1.2	2.1	3.5	0.3	0.3	0.6	0.3
WA	1.1	2.1	2.2	1.4	2.5	2.9	0.3	0.3	0.5	0.2
Tas.	0.5	0.8	0.9	0.5	0.9	4.7	0.5	0.5	0.7	0.4
NT	0.2	0.4	0.5	0.3	0.5	6.2	0.6	0.6	1.2	0.5
ACT	0.3	0.5	0.5	0.4	0.6	5.4	0.4	0.4	0.9	0.3
Males	3.4	6.8	7.2	4.1	7.8	1.7	0.1	0.1	0.5	0.1
Females	3.0	5.7	6.1	4.8	7.2	2.5	0.2	0.2	0.2	0.2
Persons	4.3	8.2	8.7	5.8	9.8	1.4	0.1	0.1	0.2	0.1

## STANDARD ERRORS *continued*

### MOVEMENT ESTIMATES

The following example illustrates how to use the standard error to interpret a movement estimate. Let us say that one month the published level estimate for females employed part time in Australia is 1,890,000; the next month the published level estimate is 1,900,000. The calculated standard error for the movement estimate is 10,300. The standard error is then used to interpret the published movement estimate of 10,000. For instance, the standard error of 10,300 indicates that:

- There are approximately two chances in three that the real movement over the two month period falls within the range -300 to 20,300 (10,000 + or - 10,300)
- There are approximately nineteen chances in twenty that the real movement falls within the range -10,600 to 30,600 (10,000 + or - 20,600).

The following tables show the standard errors for this month's movement estimates.

	EMPLOYED.....			UNEMPLOYED.....			Labour force	Not in labour force	Unemployment rate	Participation rate
	Full time	Part time	Total	Looking for f/t work	Looking for p/t work	Total				
	'000	'000	'000	'000	'000	'000				
NSW	10.0	7.1	11.1	4.2	2.8	4.6	11.3	9.4	0.1	0.2
Vic.	7.6	5.5	8.5	3.1	2.1	3.3	8.7	7.2	0.1	0.2
Qld	6.8	5.0	7.7	2.9	2.1	3.2	7.9	6.3	0.2	0.3
SA	3.2	2.3	3.6	1.3	0.9	1.4	3.7	3.1	0.2	0.3
WA	3.9	2.9	4.4	1.7	1.1	1.8	4.5	3.5	0.2	0.3
Tas.	1.2	0.9	1.4	0.6	0.4	0.7	1.5	1.3	0.3	0.4
NT	1.1	0.7	1.2	0.4	0.3	0.4	1.2	0.9	0.4	0.9
ACT	1.0	0.7	1.1	0.4	0.3	0.4	1.2	0.9	0.2	0.5
Males	14.2	7.4	14.9	5.5	3.2	5.9	15.3	10.9	0.1	0.2
Females	11.2	10.4	13.8	4.7	3.7	5.4	14.2	12.9	0.1	0.2
Persons	16.4	11.7	18.4	6.5	4.4	7.2	18.9	15.3	0.1	0.1

	NUMBER OF UNEMPLOYED PERSONS.....					UNEMPLOYMENT RATE.....				
	Aged 15-19 looking for f/t work	Aged 20 and over looking for f/t work	Total looking for f/t work	Looking for p/t work	Total	Aged 15-19 looking for f/t work	Aged 20 and over looking for f/t work	Total looking for f/t work	Looking for p/t work	Total
	'000	'000	'000	'000	'000	pts	pts	pts	pts	pts
NSW	2.3	4.0	4.2	2.8	4.6	2.1	0.2	0.2	0.3	0.1
Vic.	1.5	2.9	3.1	2.1	3.3	2.3	0.2	0.2	0.3	0.1
Qld	1.7	2.7	2.9	2.1	3.2	2.3	0.2	0.2	0.4	0.2
SA	0.7	1.2	1.3	0.9	1.4	2.6	0.2	0.2	0.4	0.2
WA	1.0	1.6	1.7	1.1	1.8	2.4	0.2	0.2	0.4	0.2
Tas.	0.4	0.6	0.6	0.4	0.7	3.6	0.4	0.4	0.6	0.3
NT	0.2	0.4	0.4	0.3	0.4	5.6	0.5	0.5	1.2	0.4
ACT	0.2	0.4	0.4	0.3	0.4	5.1	0.3	0.3	0.7	0.2
Males	2.9	5.2	5.5	3.2	5.9	1.4	0.1	0.1	0.4	0.1
Females	2.5	4.4	4.7	3.7	5.4	1.9	0.2	0.2	0.2	0.1
Persons	3.5	6.1	6.5	4.4	7.2	1.0	0.1	0.1	0.2	0.1



# WHAT IF...? REVISIONS TO TREND ESTIMATES

## EFFECT OF NEW SEASONALLY ADJUSTED ESTIMATES ON TREND ESTIMATES

Each time new seasonally adjusted estimates become available, trend estimates are revised (see paragraphs 19 and 20 of Explanatory Notes).

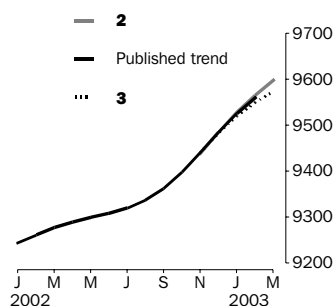
### TREND REVISIONS

The examples in the tables below show four illustrative scenarios and the consequent revisions to previous trend estimates of employment and unemployment rate.

- 1** The March seasonally adjusted estimate is the same as the February estimate.
- 2** The March seasonally adjusted estimate is higher than the February estimate by:
  - +0.29% for employment
  - +1.85% for the unemployment rate
- 3** The March seasonally adjusted estimate is lower than the February estimate by:
  - -0.29% for employment
  - -1.85% for the unemployment rate
- 4** The March seasonally adjusted estimate results in a revised February trend estimate which is identical to the new March trend estimate.

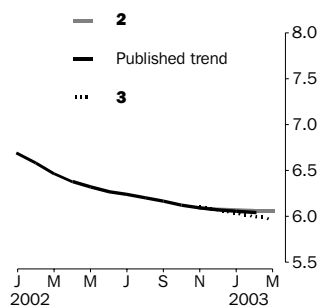
The percentage changes of 0.29% and 1.85% were chosen because they represent the average absolute monthly percentage changes in employment and the unemployment rate respectively.

### EMPLOYMENT ('000)



		WHAT IF NEXT MONTH'S SEASONALLY ADJUSTED ESTIMATE IS:				
		<b>1</b>	<b>2</b>	<b>3</b>	<b>4</b>	
		9 563.5 <i>i.e. the same as Feb 2003</i>	9 591.3 <i>i.e. rises by 0.29%</i>	9 535.8 <i>i.e. falls by 0.29%</i>	9 365.5 <i>i.e. same trend for Feb &amp; Mar</i>	
		<i>TREND AS PUBLISHED</i>				
2002	December	9 484.2	9 484.0	9 485.2	9 482.7	9 475.1
	January	9 526.1	9 524.3	9 528.4	9 520.2	9 494.9
	February	9 559.6	9 557.8	9 565.6	9 550.1	9 502.5
	March (new)	—	9 585.9	9 597.6	9 574.2	9 502.5

### UNEMPLOYMENT RATE (%)



		WHAT IF NEXT MONTH'S SEASONALLY ADJUSTED ESTIMATE IS:				
		<b>1</b>	<b>2</b>	<b>3</b>	<b>4</b>	
		6.0 <i>i.e. the same as Feb 2003</i>	6.1 <i>i.e. rises by 1.85%</i>	5.9 <i>i.e. falls by 1.85%</i>	6.1 <i>i.e. same trend for Feb &amp; Mar</i>	
		<i>TREND AS PUBLISHED</i>				
2002	December	6.1	6.1	6.1	6.1	6.1
	January	6.1	6.1	6.1	6.0	6.1
	February	6.0	6.0	6.1	6.0	6.1
	March (new)	—	6.0	6.1	6.0	6.1





## FOR MORE INFORMATION...

- INTERNET* **www.abs.gov.au** the ABS web site is the best place to start for access to summary data from our latest publications, information about the ABS, advice about upcoming releases, our catalogue, and Australia Now—a statistical profile.
- LIBRARY* A range of ABS publications is available from public and tertiary libraries Australia-wide. Contact your nearest library to determine whether it has the ABS statistics you require, or visit our web site for a list of libraries.
- CPI INFOLINE* For current and historical Consumer Price Index data, call 1902 981 074 (call cost 77c per minute).
- DIAL-A-STATISTIC* For the latest figures for National Accounts, Balance of Payments, Labour Force, Average Weekly Earnings, Estimated Resident Population and the Consumer Price Index call 1900 986 400 (call cost 77c per minute).

## INFORMATION SERVICE

Data which have been published and can be provided within five minutes are free of charge. Our information consultants can also help you to access the full range of ABS information—ABS user-pays services can be tailored to your needs, time frame and budget. Publications may be purchased. Specialists are on hand to help you with analytical or methodological advice.

- PHONE* **1300 135 070**
- EMAIL* **client.services@abs.gov.au**
- FAX* 1300 135 211
- POST* Client Services, ABS, GPO Box 796, Sydney 2001

## WHY NOT SUBSCRIBE?

ABS subscription services provide regular, convenient and prompt deliveries of ABS publications and products as they are released. Email delivery of monthly and quarterly publications is available.

- PHONE* 1300 366 323
- EMAIL* subscriptions@abs.gov.au
- FAX* 03 9615 7848
- POST* Subscription Services, ABS, GPO Box 2796Y, Melbourne 3001



2620200002031  
ISSN 1031-038X

RRP \$22.00